



Product Outgoing Inspection Report

Cloud15-P20-F2A2



Product Manager	System Leader	System Engineer
Honwen Hong	James Chan	Mike Chen

Thermal & Functions Test Report

Cloud15-P20-F2A2 (S/N:SR202304170101)

INDEX

1.	SYSTEM SPEC.....	2
1-1.	PRODUCT PHOTOS.....	2
1-2.	SYSTEM CONFIGURATION	2
2.	TEST PLAN.....	3
2.1	I/O FUNCTION.....	3
3.	I/O FUNCTION TEST	4
3.1	LAN CONNECT PIN DEFINE	4
3.2	LAN TRANSFER DATA TEST.....	4
3.3	USB CONNECT PIN DEFINE.....	5
3.4	USB PORT SPEED TEST.....	6
3.4.1	USB PORT #1	6
3.4.2	USB PORT #2	6
3.5	DISPLAY PORT.....	7
3.6	BNC TEST (CONNECT HD-SDI CAMERA)	7
3.6.1	BNC #1	7
3.6.2	BNC #2	8
3.7	SERIAL CONNECT PIN DEFINE.....	8
3.8	SERIAL PORT TEST.....	9
4.	FUNCTION KEY TEST.....	9
4.1	20 SOFT PROGRAMMABLE BUTTONS	9
5.	TOUCH SCREEN	10
5.1	25 POINT CALIBRATION	10
5.2	DRAW TEST.....	11

Thermal & Functions Test Report

Cloud15-P20-F2A2 (S/N:SR202304170101)

1. SYSTEM SPEC

1-1. PRODUCT PHOTOS



1-2. SYSTEM CONFIGURATION

System Configuration	
Motherboard	7 StarLake SK-515
CPU	Intel® Xeon® W-11865MLE Processor CORES: 8 SUSTAINED PREDICTABLE FREQUENCY(GHz): 1.5 USAGE POWER GUIDE* (W): 25
Memory	Dual Channel DDR4 3200 ECC support, up to 96 GB
SSD	7 StarLake 7SLSSO512GTLEW-SD2-2 512GB Operation Temperature: Wide Temp. grade : -40°C ~ 85°C Normal Temp. grade : 0°C ~ 70°C
POWER BOARD	18 V ~ 36 V , 12 Vdc Optional: MIL STD 461, MIL STD 1275,
GPU	NVIDIA® Ampere RTX A2000, 80W, 8GB GDDR6, 2,560 CUDA Cores

Thermal & Functions Test Report

Cloud15-P20-F2A2 (S/N:SR202304170101)

2. TEST PLAN

2.1 I/O FUNCTION

#Confirm the system specifications and I/O connection to ensure that they are functioning properly

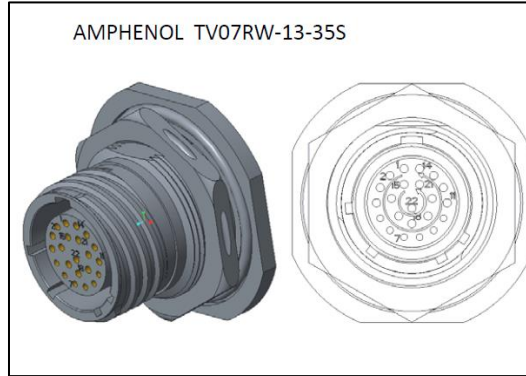
Item	Test Criteria	Result
LAN Port	Connection 1G/10G/100G SWITCH HUB transfer data test, it can work normally.	PASS
USB2.0	Connect a 2.5-inch USB3.0 SSD device and transfer data for testing, it can work normally.	PASS
Display Port	Check work well.	PASS
BNC Port	Connect HD-SDI Camera Test, it can work normally.	PASS
Serial Port	Connect RS232 Loopback, Check work well.	PASS

Thermal & Functions Test Report

Cloud15-P20-F2A2 (S/N:SR202304170101)

3. I/O FUNCTION TEST

3.1 LAN CONNECT PIN DEFINE



TV07RW 13-35S	RJ45			TV07RW 13-35S	RJ45		
1	1	WHITE / ORANGE	TP1+	8	1	WHITE / ORANGE	TP1+
2	2	ORANG	TP1-	9	2	ORANG	TP1-
3	3	WHITE / GREEN	TP2+	10	3	WHITE / GREEN	TP2+
4	6	GREEN	TP2-	11	6	GREEN	TP2-
5	4	BLUE	TP3+	12	4	BLUE	TP3+
6	5	WHITE / BLUE	TP3-	13	5	WHITE / BLUE	TP3-
15	7	WHITE / BROWN	TP4+	19	7	WHITE / BROWN	TP4+
16	8	BROWN	TP4-	20	8	BROWN	TP4-
7				14			
17				21			
18				22			
SHELL	SHELL		SHELL GND	SHELL	SHELL		SHELL GND

3.2 LAN TRANSFER DATA TEST

(1) 10/100/1000 Ethernet Ports Test (Receive)

```
Administrator: Command Prompt - iperf3.exe -c 192.168.1.100 -i10 -t2000
4] 58550.00-58560.00 sec 9.20 GBytes 7.90 Gbits/sec
4] 58560.00-58570.00 sec 8.14 GBytes 6.99 Gbits/sec
4] 58570.00-58580.00 sec 8.75 GBytes 7.51 Gbits/sec
4] 58580.00-58590.00 sec 9.06 GBytes 7.78 Gbits/sec
4] 58590.00-58600.00 sec 8.38 GBytes 7.20 Gbits/sec
4] 58600.00-58610.00 sec 9.31 GBytes 8.00 Gbits/sec
4] 58610.00-58620.00 sec 8.78 GBytes 7.54 Gbits/sec
4] 58620.00-58630.00 sec 8.23 GBytes 7.07 Gbits/sec
4] 58630.00-58640.00 sec 9.16 GBytes 7.87 Gbits/sec
4] 58640.00-58650.00 sec 9.05 GBytes 7.78 Gbits/sec
4] 58650.00-58660.00 sec 8.61 GBytes 7.40 Gbits/sec
4] 58660.00-58670.00 sec 8.43 GBytes 7.24 Gbits/sec
4] 58670.00-58680.00 sec 9.02 GBytes 7.75 Gbits/sec
4] 58680.00-58690.00 sec 8.57 GBytes 7.36 Gbits/sec
4] 58690.00-58700.00 sec 9.22 GBytes 7.92 Gbits/sec
4] 58700.00-58710.00 sec 8.86 GBytes 7.61 Gbits/sec
4] 58710.00-58720.00 sec 8.94 GBytes 7.68 Gbits/sec
4] 58720.00-58730.00 sec 8.72 GBytes 7.49 Gbits/sec
4] 58730.00-58740.00 sec 9.36 GBytes 8.04 Gbits/sec
4] 58740.00-58750.00 sec 9.38 GBytes 8.06 Gbits/sec
4] 58750.00-58760.00 sec 8.45 GBytes 7.26 Gbits/sec
4] 58760.00-58770.00 sec 8.84 GBytes 7.59 Gbits/sec
4] 58770.00-58780.00 sec 8.31 GBytes 7.14 Gbits/sec
4] 58780.00-58790.00 sec 8.20 GBytes 7.04 Gbits/sec
4] 58790.00-58800.00 sec 9.16 GBytes 7.87 Gbits/sec
4] 58800.00-58810.00 sec 9.44 GBytes 8.10 Gbits/sec
4] 58810.00-58820.00 sec 8.68 GBytes 7.46 Gbits/sec
4] 58820.00-58830.00 sec 8.93 GBytes 7.67 Gbits/sec
4] 58830.00-58840.00 sec 8.59 GBytes 7.38 Gbits/sec
4] 58840.00-58850.00 sec 8.52 GBytes 7.32 Gbits/sec
4] 58850.00-58860.00 sec 8.90 GBytes 7.65 Gbits/sec
4] 58860.00-58870.00 sec 8.17 GBytes 7.02 Gbits/sec
4] 58870.00-58880.00 sec 8.62 GBytes 7.41 Gbits/sec
4] 58880.00-58890.00 sec 8.98 GBytes 7.71 Gbits/sec
4] 58890.00-58900.00 sec 8.14 GBytes 6.99 Gbits/sec
4] 58900.00-58910.00 sec 8.29 GBytes 7.12 Gbits/sec
4] 58910.00-58920.00 sec 8.18 GBytes 7.03 Gbits/sec
4] 58920.00-58930.00 sec 9.25 GBytes 7.95 Gbits/sec
4] 58930.00-58940.00 sec 9.20 GBytes 7.90 Gbits/sec
4] 58940.00-58950.00 sec 8.50 GBytes 7.30 Gbits/sec
4] 58950.00-58960.00 sec 8.38 GBytes 7.20 Gbits/sec
4] 58960.00-58970.00 sec 9.09 GBytes 7.81 Gbits/sec
```

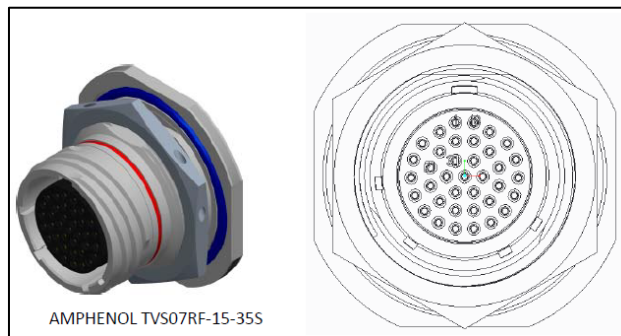
Thermal & Functions Test Report

Cloud15-P20-F2A2 (S/N:SR202304170101)

(2) 10/100/1000 Ethernet Ports Test (Transmit)

```
Administrator: Command Prompt - iperf3.exe -s
[ 5] 58933.00-58934.00 sec 876 MBytes 7.34 Gbits/sec
[ 5] 58934.00-58935.00 sec 1.11 GBytes 9.54 Gbits/sec
[ 5] 58935.00-58936.00 sec 1.04 GBytes 8.95 Gbits/sec
[ 5] 58936.00-58937.00 sec 1003 MBytes 8.41 Gbits/sec
[ 5] 58937.00-58938.00 sec 861 MBytes 7.22 Gbits/sec
[ 5] 58938.00-58939.00 sec 876 MBytes 7.35 Gbits/sec
[ 5] 58939.00-58940.00 sec 973 MBytes 8.16 Gbits/sec
[ 5] 58940.00-58941.00 sec 747 MBytes 6.26 Gbits/sec
[ 5] 58941.00-58942.00 sec 813 MBytes 6.83 Gbits/sec
[ 5] 58942.00-58943.00 sec 1.06 GBytes 9.10 Gbits/sec
[ 5] 58943.00-58944.00 sec 822 MBytes 6.89 Gbits/sec
[ 5] 58944.00-58945.00 sec 764 MBytes 6.41 Gbits/sec
[ 5] 58945.00-58946.00 sec 1.13 GBytes 9.69 Gbits/sec
[ 5] 58946.00-58947.00 sec 908 MBytes 7.62 Gbits/sec
[ 5] 58947.00-58948.00 sec 855 MBytes 7.17 Gbits/sec
[ 5] 58948.00-58949.00 sec 844 MBytes 7.08 Gbits/sec
[ 5] 58949.00-58950.00 sec 709 MBytes 5.95 Gbits/sec
[ 5] 58950.00-58951.00 sec 1.00 GBytes 8.61 Gbits/sec
[ 5] 58951.00-58952.00 sec 892 MBytes 7.47 Gbits/sec
[ 5] 58952.00-58953.00 sec 979 MBytes 8.21 Gbits/sec
[ 5] 58953.00-58954.00 sec 590 MBytes 4.96 Gbits/sec
[ 5] 58954.00-58955.00 sec 890 MBytes 7.46 Gbits/sec
[ 5] 58955.00-58956.00 sec 909 MBytes 7.63 Gbits/sec
[ 5] 58956.00-58957.00 sec 914 MBytes 7.67 Gbits/sec
[ 5] 58957.00-58958.00 sec 810 MBytes 6.79 Gbits/sec
[ 5] 58958.00-58959.00 sec 648 MBytes 5.44 Gbits/sec
[ 5] 58959.00-58960.00 sec 921 MBytes 7.73 Gbits/sec
[ 5] 58960.00-58961.00 sec 1.01 GBytes 8.67 Gbits/sec
[ 5] 58961.00-58962.00 sec 1.03 GBytes 8.84 Gbits/sec
[ 5] 58962.00-58963.00 sec 904 MBytes 7.58 Gbits/sec
[ 5] 58963.00-58964.00 sec 982 MBytes 8.23 Gbits/sec
[ 5] 58964.00-58965.00 sec 842 MBytes 7.07 Gbits/sec
[ 5] 58965.00-58966.00 sec 1000 MBytes 8.39 Gbits/sec
[ 5] 58966.00-58967.00 sec 1013 MBytes 8.49 Gbits/sec
[ 5] 58967.00-58968.00 sec 802 MBytes 6.73 Gbits/sec
[ 5] 58968.00-58969.00 sec 804 MBytes 6.75 Gbits/sec
[ 5] 58969.00-58970.00 sec 878 MBytes 7.38 Gbits/sec
[ 5] 58970.00-58971.00 sec 1.14 GBytes 9.78 Gbits/sec
[ 5] 58971.00-58972.00 sec 733 MBytes 6.15 Gbits/sec
[ 5] 58972.00-58973.00 sec 447 MBytes 3.75 Gbits/sec
[ 5] 58973.00-58974.00 sec 574 MBytes 4.82 Gbits/sec
```

3.3 USB CONNECT PIN DEFINE



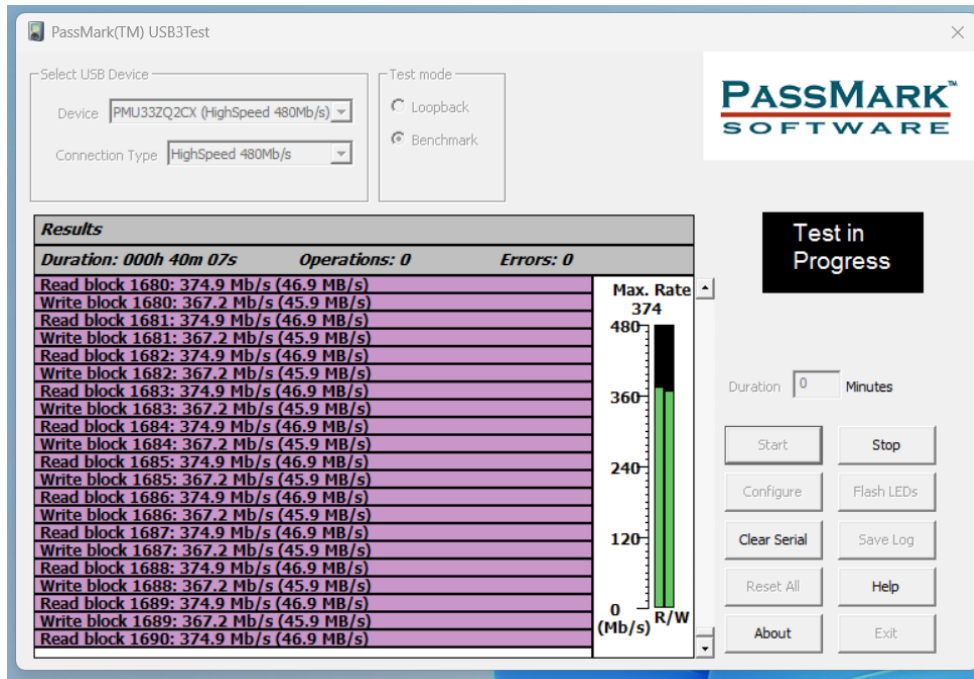
TVS07RF-15-35S	RS232 (COM1)	TVS07RF-15-35S	RS232 (COM2)	TVS07RF-15-35S	USB2.0
1	DCD	5	DCD	10	VCC
2	RX	6	RX	11	D-
3	TX	7	TX	12	D+
4	DTR	8	DTR	13	GND
19	GND	9	GND	25	VCC
20	DSR	22	DSR	26	D-
21	RTS	23	RTS	27	D+
31	CTS	24	CTS	34	GND
32	RI	33	RI		

Thermal & Functions Test Report

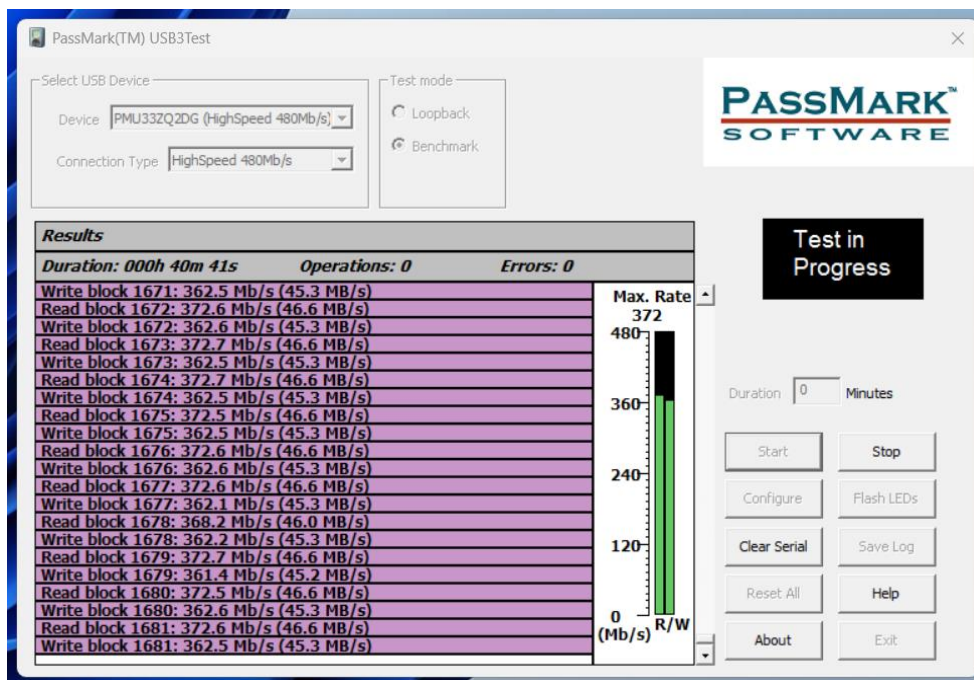
Cloud15-P20-F2A2 (S/N:SR202304170101)

3.4 USB PORT SPEED TEST

3.4.1 USB PORT #1



3.4.2 USB PORT #2



Thermal & Functions Test Report

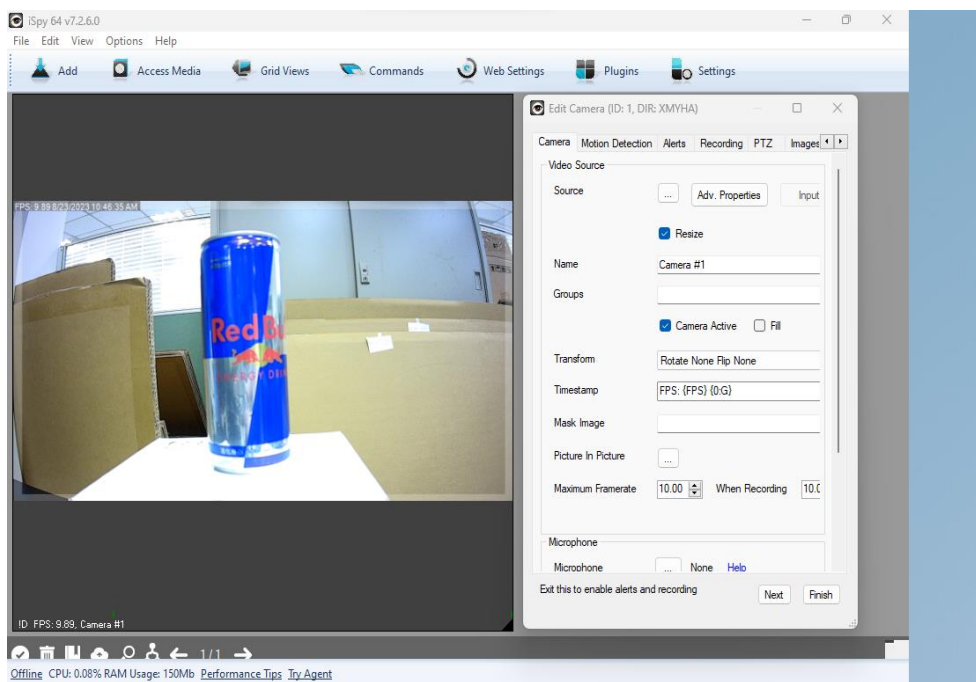
Cloud15-P20-F2A2 (S/N:SR202304170101)

3.5 DISPLAY PORT



3.6 BNC Test (Connect HD-SDI Camera)

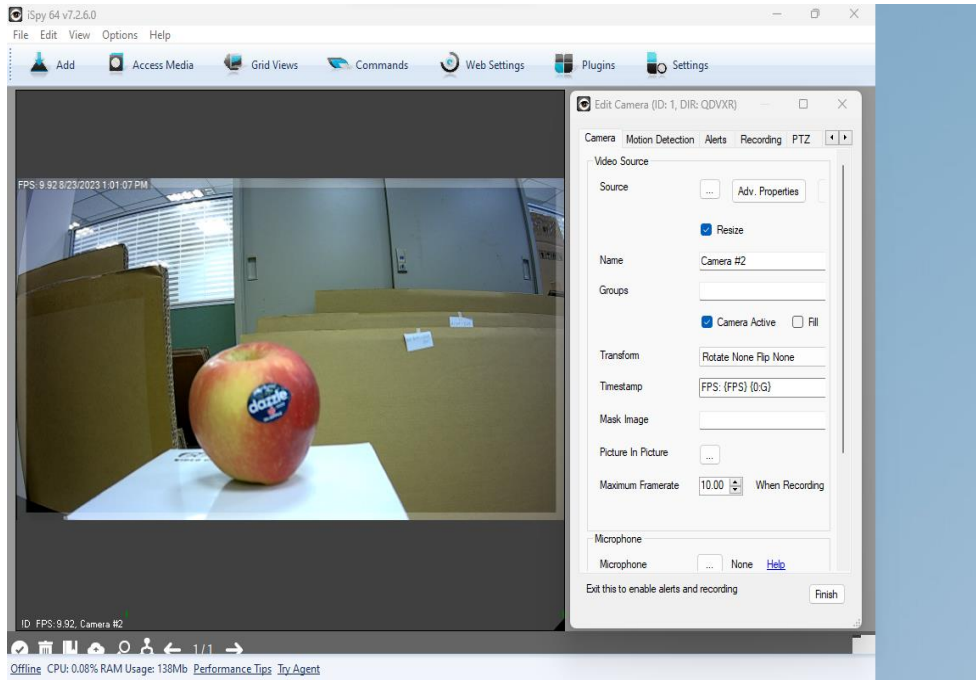
3.6.1 BNC #1



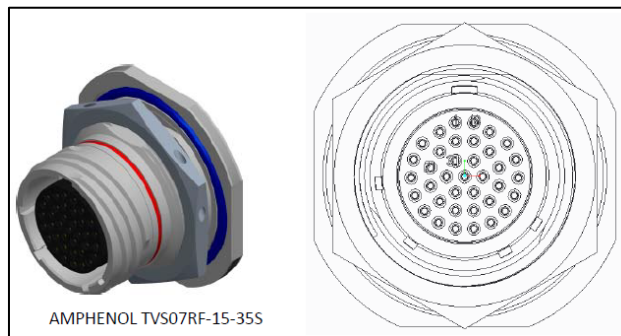
Thermal & Functions Test Report

Cloud15-P20-F2A2 (S/N:SR202304170101)

3.6.2 BNC #2



3.7 SERIAL CONNECT PIN DEFINE

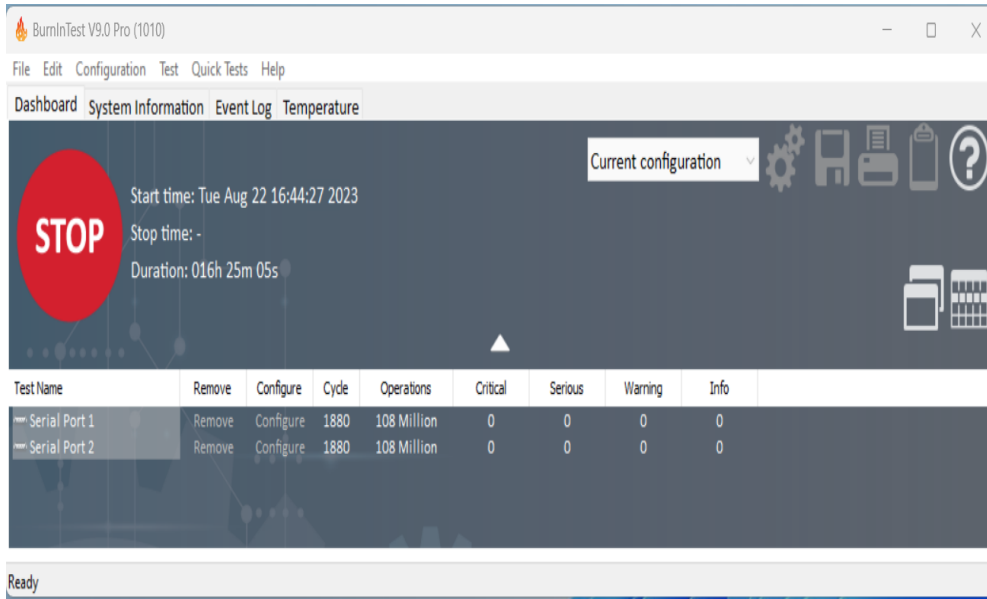


TVS07RF-15-35S	RS232 (COM1)	TVS07RF-15-35S	RS232 (COM2)	TVS07RF-15-35S	USB2.0
1	DCD	5	DCD	10	VCC
2	RX	6	RX	11	D-
3	TX	7	TX	12	D+
4	DTR	8	DTR	13	GND
19	GND	9	GND	25	VCC
20	DSR	22	DSR	26	D-
21	RTS	23	RTS	27	D+
31	CTS	24	CTS	34	GND
32	RI	33	RI		

Thermal & Functions Test Report

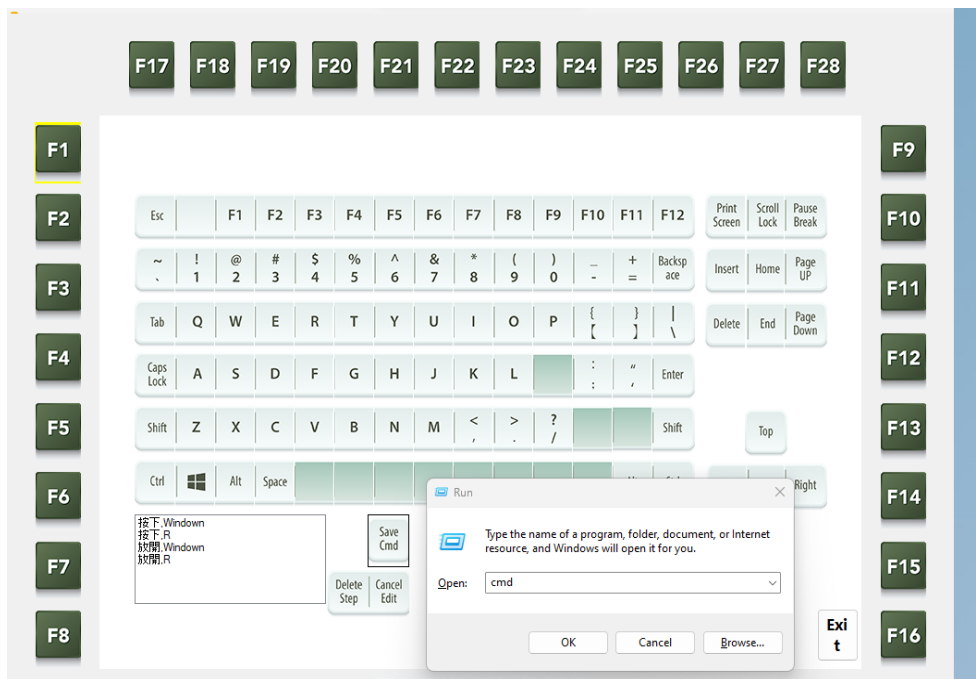
Cloud15-P20-F2A2 (S/N:SR202304170101)

3.8 SERIAL PORT TEST



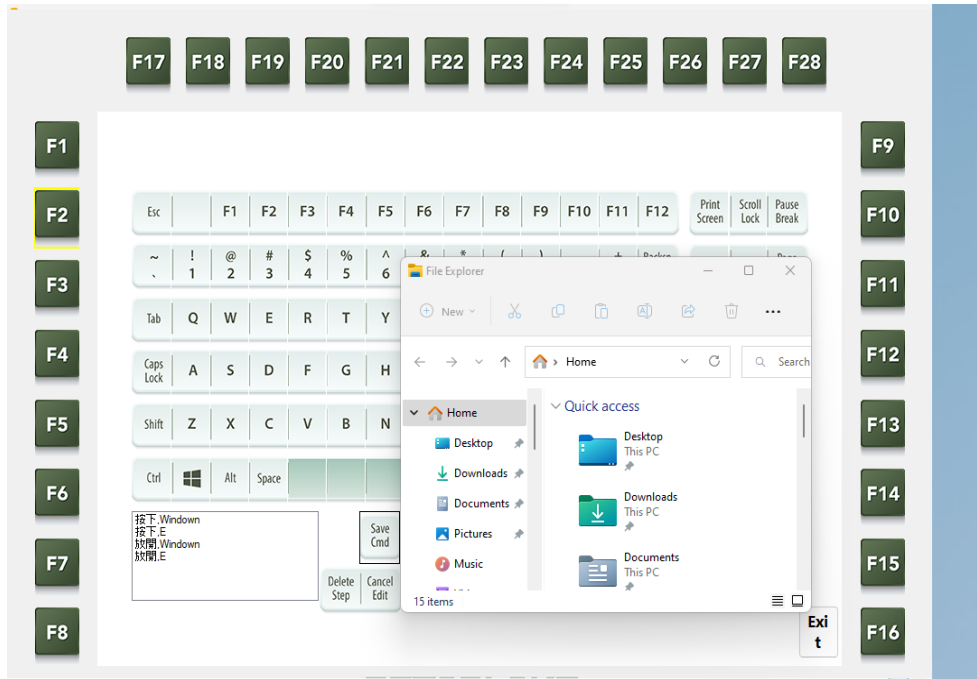
4. FUNCTION KEY TEST

4.1 20 SOFT PROGRAMMABLE BUTTONS



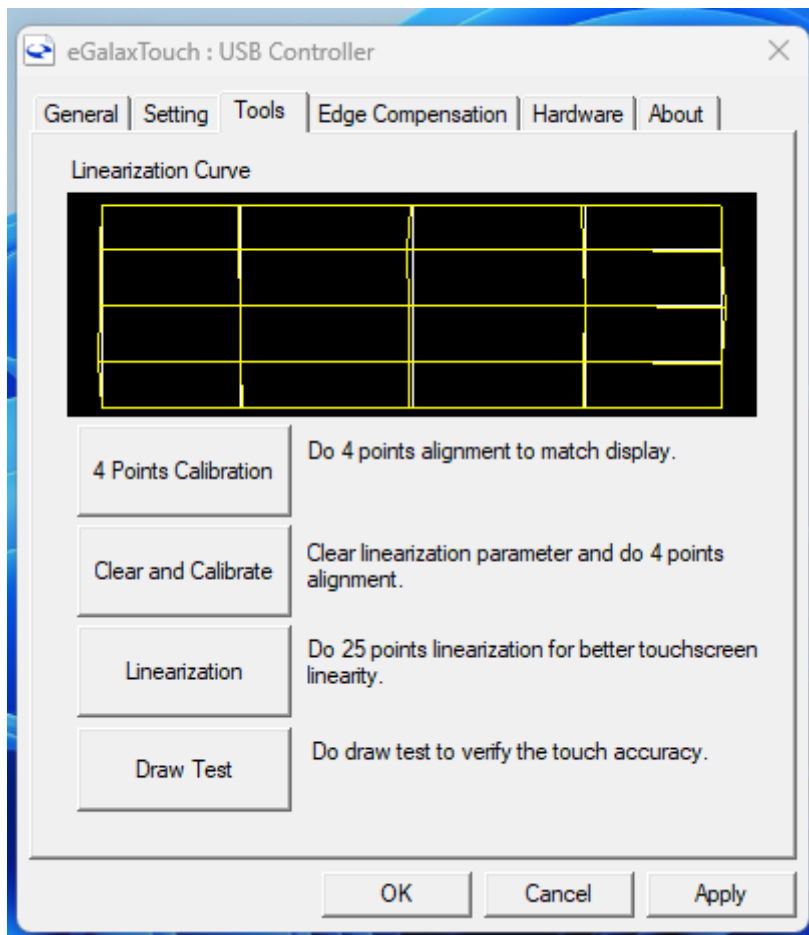
Thermal & Functions Test Report

Cloud15-P20-F2A2 (S/N:SR202304170101)



5. TOUCH SCREEN

5.1 25 POINT CALIBRATION



Thermal & Functions Test Report

Cloud15-P20-F2A2 (S/N:SR202304170101)

5.2 DRAW TEST

