



IIC-G2060S

**RUGGED GPU SERVER
SUPPORT NVIDIA RXT2060S**



User's Manual

Revision Date: June. 29. 2022

Safety Information

Electrical safety

- To prevent electrical shock hazard, disconnect the power cable from the electrical outlet before relocating the system.
- When adding or removing devices to or from the system, ensure that the power cables for the devices are unplugged before the signal cables are connected. If possible, disconnect all power cables from the existing system before you add a device.
- Before connecting or removing signal cables from the motherboard, ensure that all power cables are unplugged.
- Seek professional assistance before using an adapter or extension cord. These devices could interrupt the grounding circuit.
- Make sure that your power supply is set to the correct voltage in your area.
- If you are not sure about the voltage of the electrical outlet you are using, contact your local power company.
- If the power supply is broken, do not try to fix it by yourself. Contact a qualified service technician or your local distributor.

Operation safety

- Before installing the motherboard and adding devices on it, carefully read all the manuals that came with the package.
- Before using the product, make sure all cables are correctly connected and the power cables are not damaged. If you detect any damage, contact your dealer immediately.
- To avoid short circuits, keep paper clips, screws, and staples away from connectors, slots, sockets and circuitry.
- Avoid dust, humidity, and temperature extremes. Do not place the product in any area where it may become wet.
- Place the product on a stable surface.
- If you encounter any technical problems with the product, contact your local distributor

Statement

- All rights reserved. No part of this publication may be reproduced in any form or by any means, without prior written permission from the publisher.
- All trademarks are the properties of the respective owners.
- All product specifications are subject to change without prior notice

I11C-G2060S User's Manual

Revision Date: June. 29. 2022

Revision History

Revision	Date (yyyy/mm/dd)	Changes
V1.0	2021/06/15	First release
V1.1	2022/06/29	Add option module

Packing List

Item	Description	Q'ty
1	I11C-G2060S , AI Accelerated GPU Server	1
2	Driver CD	1

Ordering Information

i11C-G2060S

Rugged GPU Server Support NVIDIA RTX2060S with Intel 8 /9th Gen i7-9700TE CPU, Rich I/O Interface, w/GPU, 9~36V DC-DC 300W, Operation Temp. 0 to 50°C

i11C-G2060S-ET

Rugged GPU Server Support NVIDIA RTX2060S with Intel 8 /9th Gen i7-9700TE CPU, Rich I/O Interface, w/o GPU, 9~36V DC-DC 300W, Operation Temp. -20 to 55°C

i11C-G2060S-UT

Rugged GPU Server Support NVIDIA RTX2060S with Intel 8 /9th Gen i7-9700TE CPU, Rich I/O Interface, w/o GPU, 9~36V DC-DC 300W, Operation Temp. -30 to 70°C

RoHS



7Starlake RoHS Environmental Policy and Status Update

7Starlake is a global citizen for building the digital infrastructure. We are committed to providing green products and services, which are compliant with

European Union RoHS (Restriction on Use of Hazardous Substance in Electronic Equipment) directive 2011/65/EU, to be your trusted green partner and to protect our environment.

In order to meet the RoHS compliant directives, 7Starlake has established an engineering and manufacturing task force to implement the introduction of green products. The task force will ensure that we follow the standard 7Starlake development procedure and that all the new RoHS components and new manufacturing processes maintain the highest industry quality levels for which 7Starlake are renowned.

The model selection criteria will be based on market demand. Vendors and suppliers will ensure that all designed components will be RoHS compliant.

I11C-G2060S User's Manual

Revision Date: June. 29. 2022

Chapter 1 : Produc Introduction	5
1.2 Front Panel I/O Placement	7
1.3 Rear Panel I/O Placement	8
1.4 Mechanical Dimensions	9
Chapter 2 : Rear I/O Ports	10
2.1 Panel Connector Pin Define	10
Chapter 3: AMI BIOS UTILITY	11
3.1 Starting	11
3.2 Navigation Keys	11
3.3 Main	12
3.4 Advanced	13
3.4.2 Trusted Computing	13
3.4.2 CPU Configuration	14
3.4.3 ACPI Setting	15
3.4.4 Smart Setting	15
3.4.5 F81866 Super IO Configuration	16
3.4.6 Hardware Monitor	17
3.4.7 Platform Function	18
3.4.8 Serial Consolr Redirection	19
3.4.9 NVMe Configuration	20
3.4.10 USB Configuration	20
3.4.11 CSM Configuration	21
3.4.12 SATA Configuration	22
3.5 Chipset Menu	22
3.5.1 System Agent (SA) Configuration	23
3.5.2 PCH-IO Configuration	25
3.6 Security Menu	29
3.7 Boot Menu	30
3.8 Save & Exit	31

I11C-G2060S User's Manual

Revision Date: June. 29. 2022

Chapter 1 : Produc Introduction

1.1 Specifications

SYSTEM

CPU	9th Gen. Intel® Coffee Lake LGA1151 Socket Processor Intel® Core i7-9700 (8 Cores 65W) Intel® Core i7-9700TE (8 Cores 35W)
Memory type	2 x SO-DIMM DDR4 2666 MHz up to 64GB
Chipset	Intel® Q370 Chipset
Expansion slot	1 x M.2 (Key M, 2242/2260/2280) with PCIe4 and SATA3
GPU	RTX2060S (CUDA Core: 2176, 8GB GDDR6)

DISPLAY

Display Port	Resolution up to 4096 x 2304 60@Hz
HDMI	Resolution up to 4096 x 2160 30@Hz

STORAGE

Storage 1	1 x M.2 2280
Storage 2	2 x SATAIII

ETHERNET

Ethernet	Intel® I210 & I219LM GbE LAN (support 10/100/1000 Mbps)
----------	---

REAR I/O

DC-IN	1 x 4P Terminal Block
USB	4 x USB2.0

FRONT I/O

Display Port	2 x DP ; 1 x HDMI
Ethernet	2 x RJ45
Audio	2 x 3.5mm Audio Jacks (1 x MIC, 1 x Line-Out)
USB	4 x USB 3.1
Antenna	4 x Antenna hole(options)
Power Button	1 x Power Button w/indicatot LED

I11C-G2060S User's Manual

Revision Date: June. 29. 2022

POWER REQUIREMEN

Power Input	9~36V 300W DC-DC 100~240V AC-DC for options
-------------	--

APPLICATIONS, OPERATING SYSTEM

Applications	Commercial and Industrial Platforms, Embedded Computing, Process Control, Intelligent Automation and manufacturing applications
Operating System	Windows 10 64Bit, Ubuntu13.04, Ubuntu13.10, Ubuntu14.04, Fedora20

PHYSICAL

Dimension	301 x 315 x 86 mm (W x D x H)
Weight	5.5kg
Chassis	SECC
Heatsink	Aluminum Alloy, Corrosion Resistant
Finish	Anodic aluminum oxide

ENVIRONMENTAL

Compliance	MIL-STD-810G, IEC-61850-3, IEEE-1613, CE and FCC, RoHS
Operating Temp.	-20 to 55°C
Storage Temp.	-40 to 85°C
Relative Humidity	5% to 95%, non-condensing

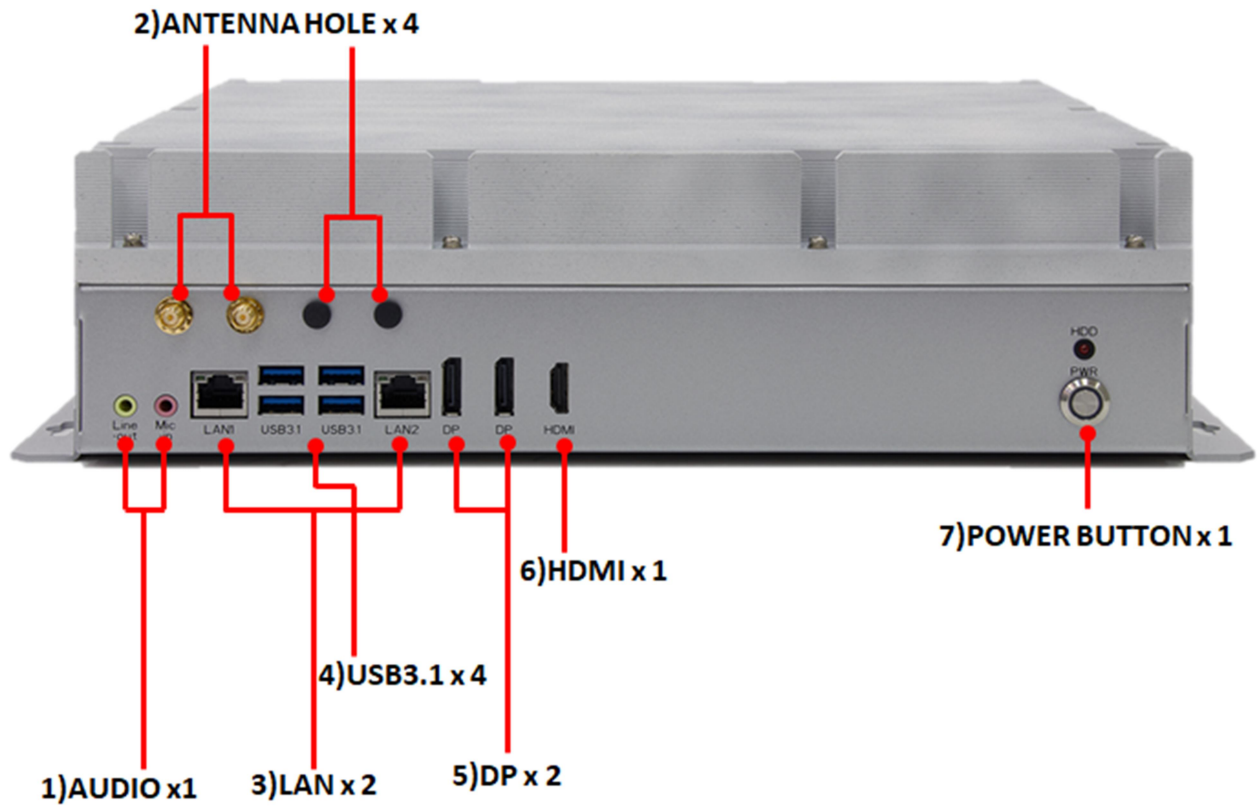
OPTION MODULE

Fan	External Fan For Turbo Mode
Canbus	4 x Canbus FD
POE	2 x POE LAN
Wifi/BT	1 x Wifi+Bluetooth

I11C-G2060S User's Manual

Revision Date: June. 29. 2022

1.2 Front Panel I/O Placement

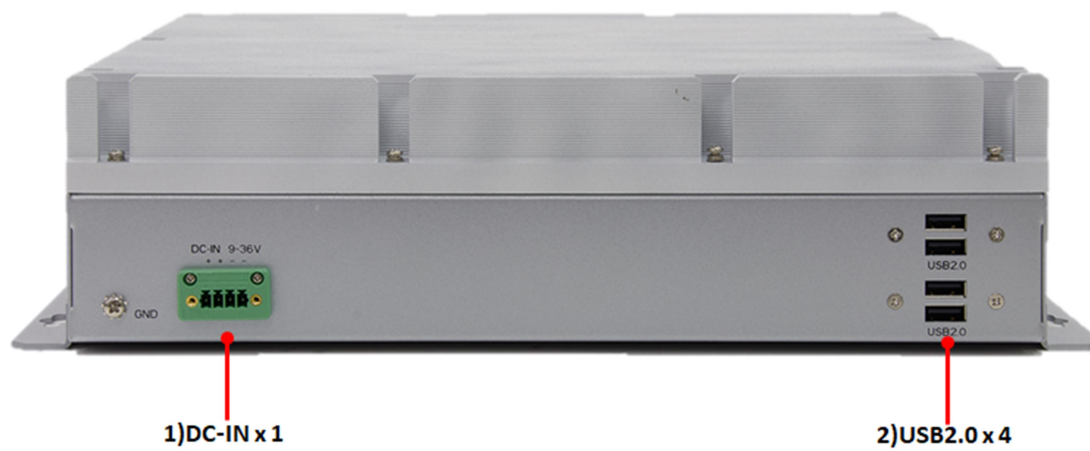


1)	AUDIO x1
2)	ANTENNA HOLD x 4
3)	LAN x 2
4)	USB3.1 x 2
5)	DP x 2
6)	HDMI x 1
7)	POWER BUTTON x 1

I11C-G2060S User's Manual

Revision Date: June. 29. 2022

1.3 Rear Panel I/O Placement

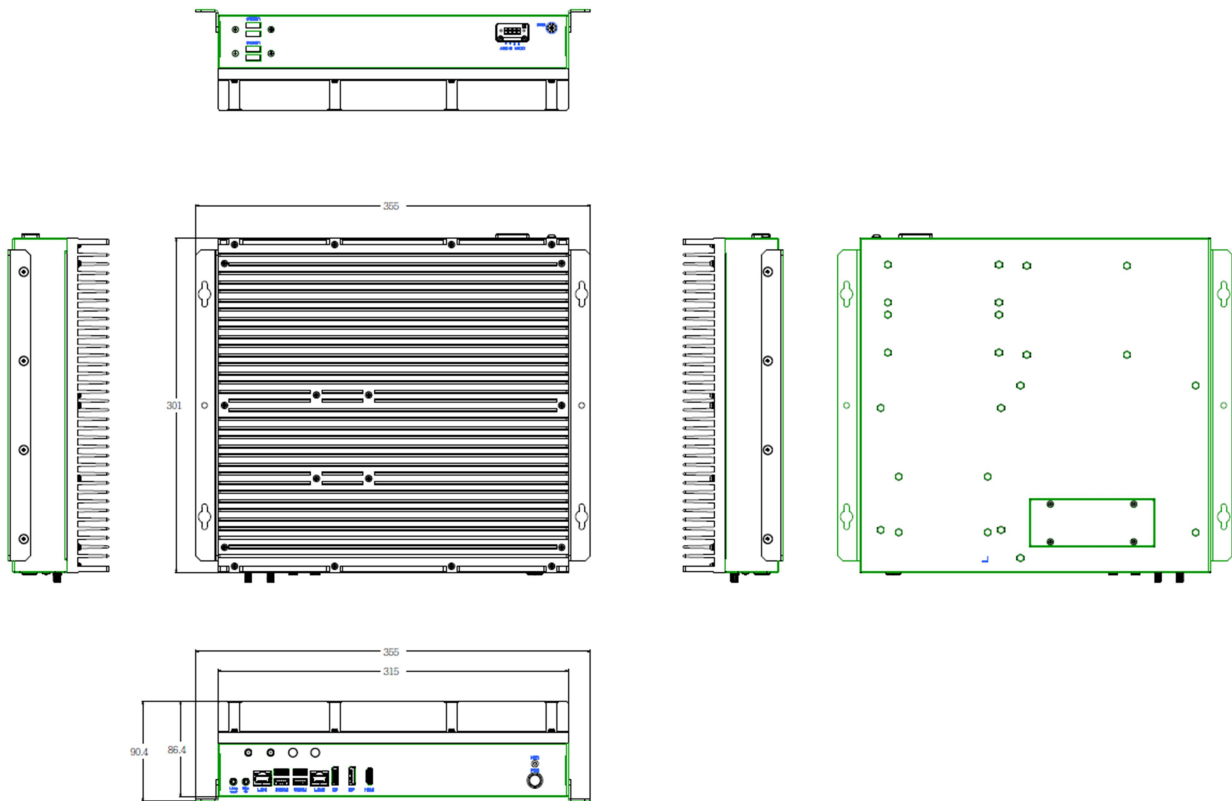


1)	DC-IN x 1
2)	USB2.0 x 4

I11C-G2060S User's Manual

Revision Date: June. 29. 2022

1.4 Mechanical Dimensions



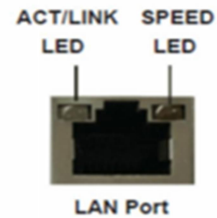
Chapter 2 : Rear I/O Ports

2.1 Panel Connector Pin Define

LAN1 and LAN2 LED

LAN Port LED Indications

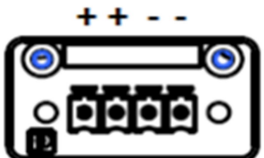
Activity/Link LED		SPEED LED	
Status	Description	Status	Description
Off	No Link	Off	10Mbps connection
Blinking	Data Activity	Yellow	100Mbps connection
On	Link	Green	1Gbps connection



AUDIO: LINE-OUT/MIC-IN

Pin	Definition	
1	Line-out	 Line-out
2	Mic-in	 Mic-in

DC-In:

Pin	DC-In	
1	V-In +	
2	V-In +	
3	GND	
4	GND	

Chapter 3: AMI BIOS UTILITY

This chapter provides users with detailed descriptions on how to set up a basic system configuration through the AMI BIOS setup utility.

3.1 Starting

To enter the setup screens, perform the following steps:

- Turn on the computer and press the key immediately.
- After the key is pressed, the main BIOS setup menu displays. Other setup screens can be accessed from the main BIOS setup menu, such as the Chipset and Power menus.

3.2 Navigation Keys

The BIOS setup/utility uses a key-based navigation system called hot keys. Most of the BIOS setup utility hot keys can be used at any time during the setup navigation process.

Some of the hot keys are <F1>, <F10>, <Enter>, <ESC>, and <Arrow> keys.



Some of the navigation keys may differ from one screen to another.

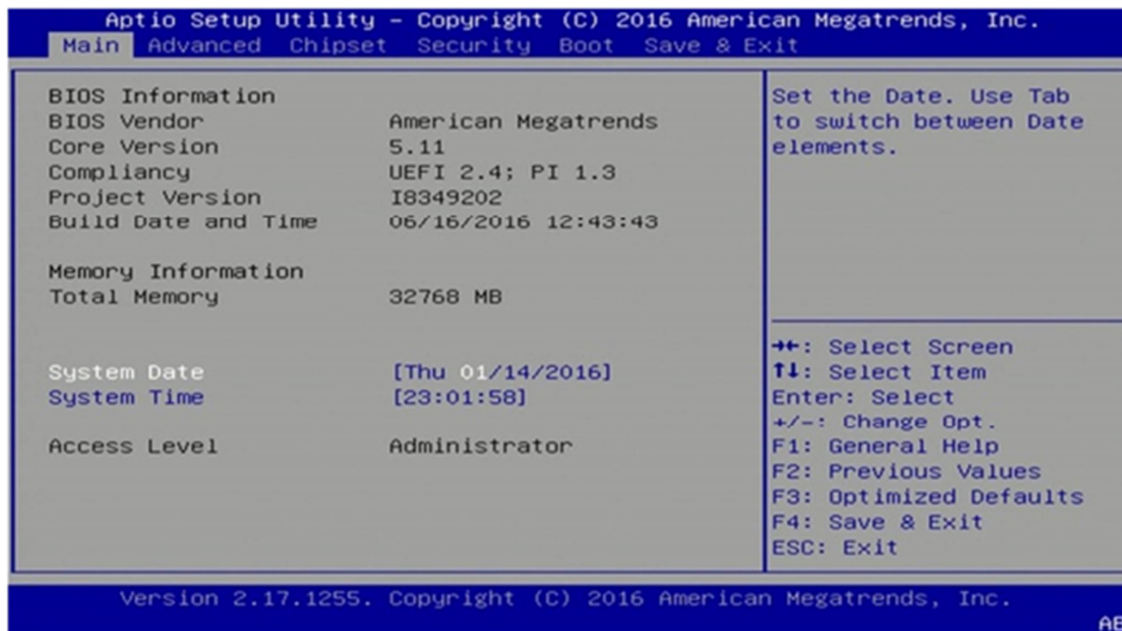
Left/Right	The Left and Right <Arrow> keys moves the cursor to select a menu.
Up/Down	The Up and Down <Arrow> keys moves the cursor to select a setup screen or sub-screen.
+– Plus/Minus	The Plus and Minus <Arrow> keys changes the field value of a particular setup setting.
Tab	The <Tab> key selects the setup fields.
F1	The <F1> key displays the General Help screen.
F10	The <F10> key saves any changes made and exits the BIOS setup utility.
Esc	The <Esc> key discards any changes made and exits the BIOS setup utility.
Enter	The <Enter> key displays a sub-screen or changes a selected or highlighted option in each menu.

I11C-G2060S User's Manual

Revision Date: June. 29. 2022

3.3 Main

The Main menu is the first screen that you will see when you enter the BIOS Setup Utility.



System Date

Use this function to change the system date.

Select System Date using the Up and Down <Arrow> keys. Enter the new values through the keyboard. Press the Left and Right <Arrow> keys to move between fields.

The date setting must be entered in MM/DD/YY format.

System Time

Use this function to change the system time.

Select System Time using the Up and Down <Arrow> keys. Enter the new values through the keyboard. Press the Left and Right <Arrow> keys to move between fields.

The time setting is entered in HH:MM:SS format.

Note: The time is in 24-hour format. For example, 5:30 A.M. appears as 05:30:00, and 5:30 P.M. as 17:30:00.

Access Level

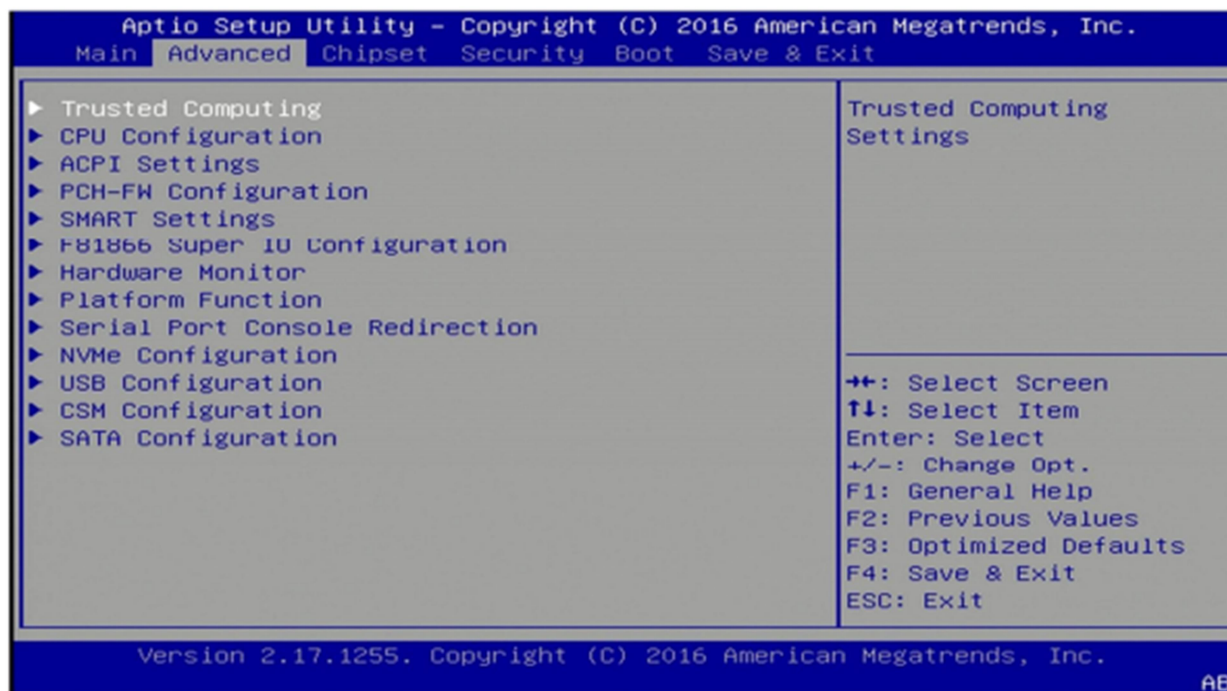
Display the access level of the current user in the BIOS.

I11C-G2060S User's Manual

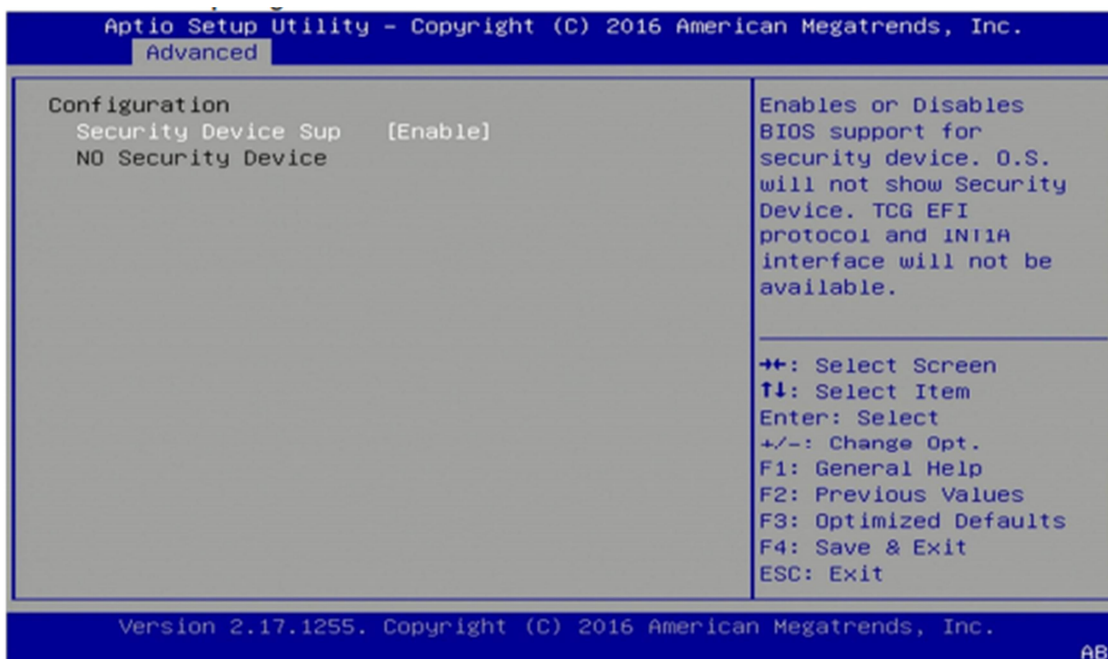
Revision Date: June. 29. 2022

3.4 Advanced

The Advanced Menu allows you to configure your system for basic operation. Some entries are defaults required by the system board, while others, if enabled, will improve the performance of your system or let you set some features according to your preference. **Setting incorrect field values may cause the system to malfunction.**



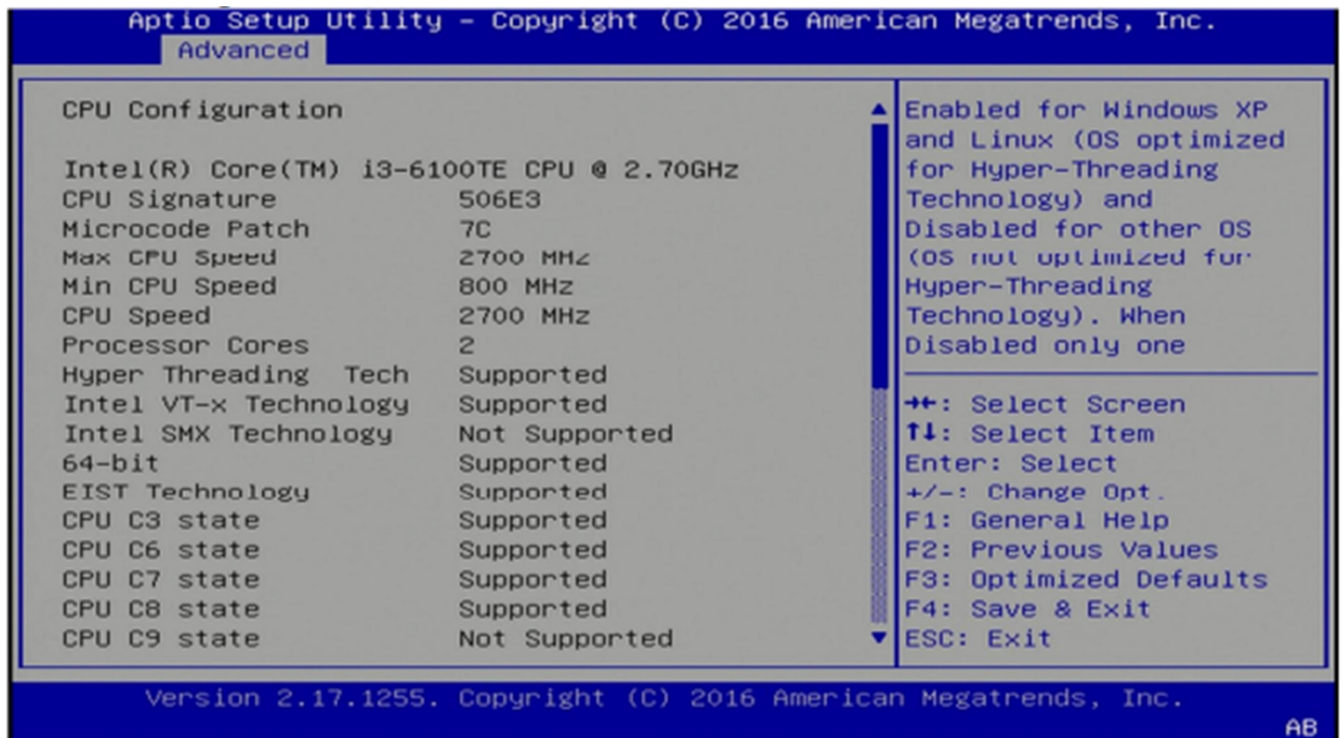
3.4.2 Trusted Computing



I11C-G2060S User's Manual

Revision Date: June. 29. 2022

3.4.2 CPU Configuration



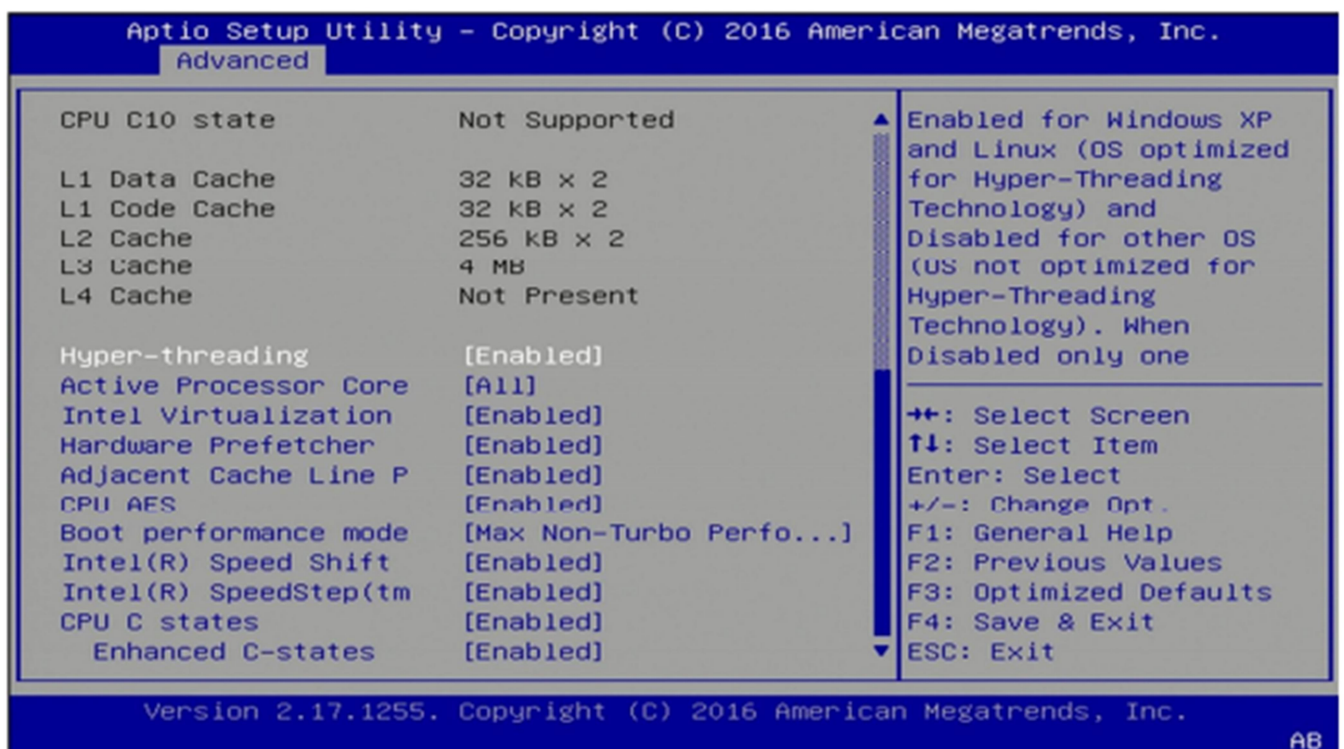
Aptio Setup Utility - Copyright (C) 2016 American Megatrends, Inc.
Advanced

CPU Configuration	
Intel(R) Core(TM) i3-6100TE CPU @ 2.70GHz	
CPU Signature	506E3
Microcode Patch	7C
Max CPU Speed	2700 MHz
Min CPU Speed	800 MHz
CPU Speed	2700 MHz
Processor Cores	2
Hyper Threading Tech	Supported
Intel VT-x Technology	Supported
Intel SMX Technology	Not Supported
64-bit	Supported
EIST Technology	Supported
CPU C3 state	Supported
CPU C6 state	Supported
CPU C7 state	Supported
CPU C8 state	Supported
CPU C9 state	Not Supported

Enabled for Windows XP and Linux (OS optimized for Hyper-Threading Technology) and Disabled for other OS (OS not optimized for Hyper-Threading Technology). When Disabled only one

←←: Select Screen
↑↓: Select Item
Enter: Select
+/-: Change Opt.
F1: General Help
F2: Previous Values
F3: Optimized Defaults
F4: Save & Exit
ESC: Exit

Version 2.17.1255. Copyright (C) 2016 American Megatrends, Inc. AB



Aptio Setup Utility - Copyright (C) 2016 American Megatrends, Inc.
Advanced

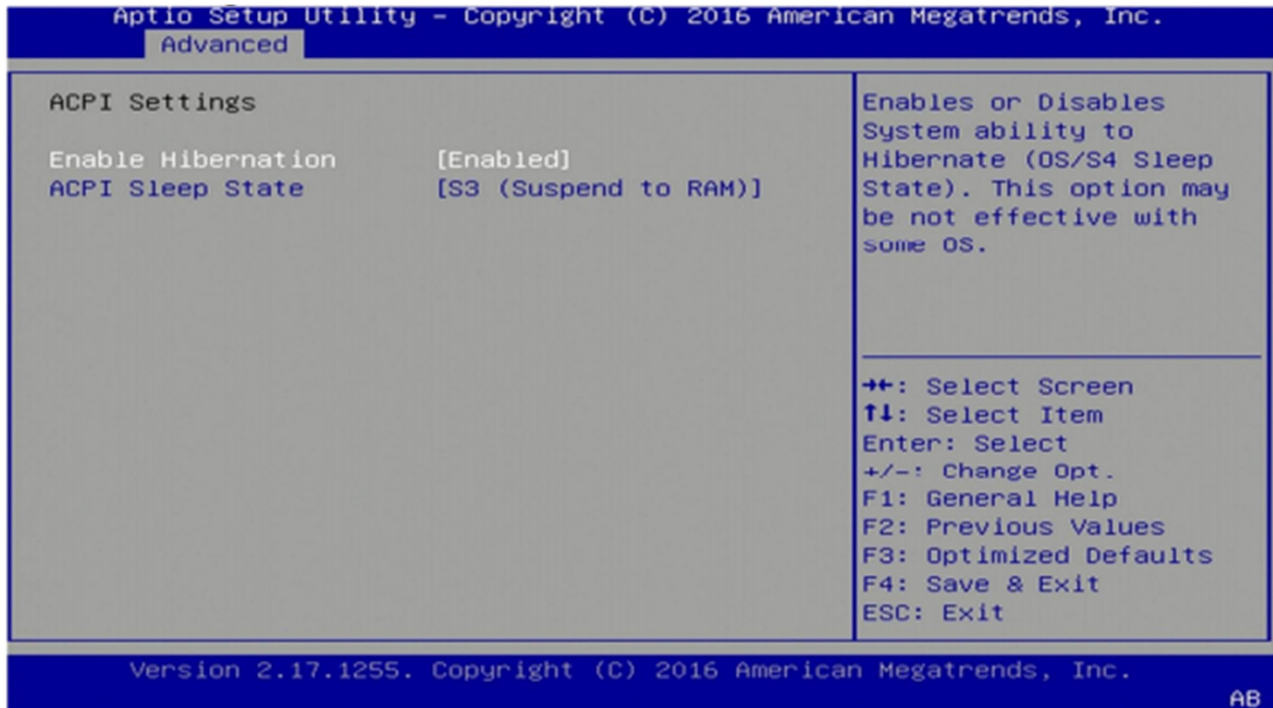
CPU C10 state	Not Supported
L1 Data Cache	32 KB x 2
L1 Code Cache	32 KB x 2
L2 Cache	256 KB x 2
L3 Cache	4 MB
L4 Cache	Not Present
Hyper-threading	[Enabled]
Active Processor Core	[All]
Intel Virtualization	[Enabled]
Hardware Prefetcher	[Enabled]
Adjacent Cache Line P	[Enabled]
CPU AES	[Enabled]
Boot performance mode	[Max Non-Turbo Perfo...]
Intel(R) Speed Shift	[Enabled]
Intel(R) SpeedStep(tm)	[Enabled]
CPU C states	[Enabled]
Enhanced C-states	[Enabled]

Enabled for Windows XP and Linux (OS optimized for Hyper-Threading Technology) and Disabled for other OS (OS not optimized for Hyper-Threading Technology). When Disabled only one

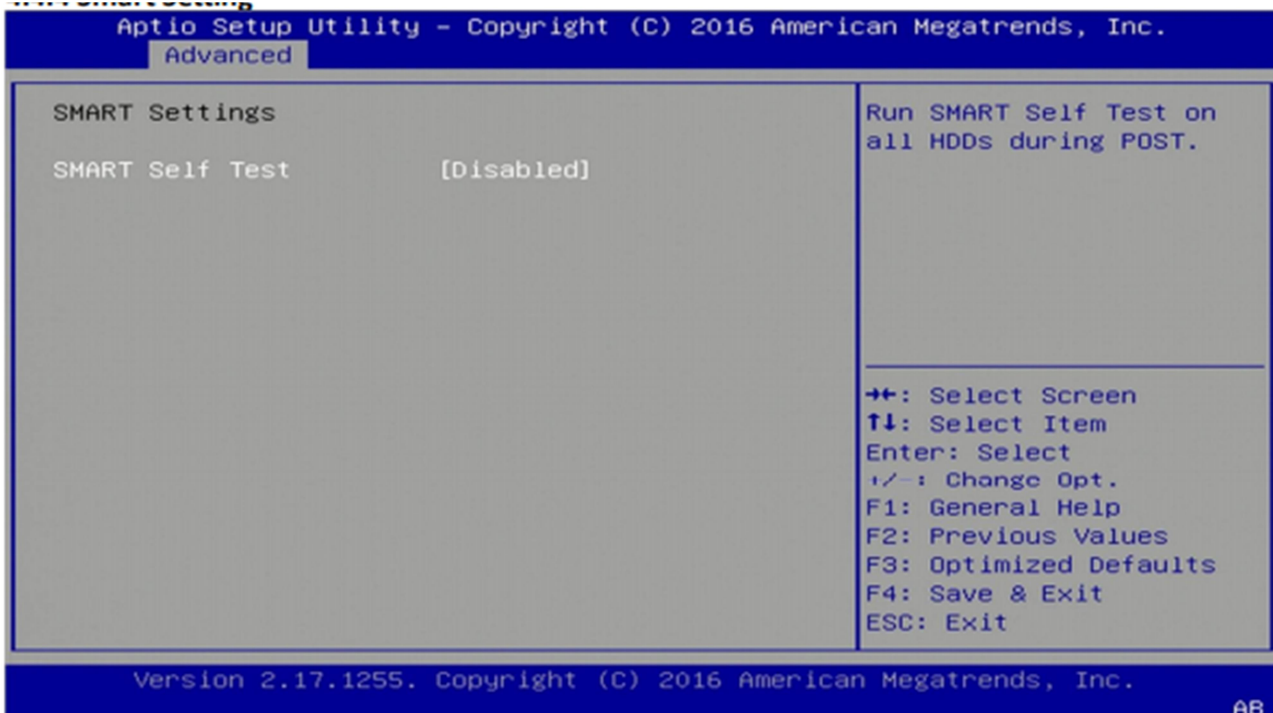
←←: Select Screen
↑↓: Select Item
Enter: Select
+/-: Change Opt.
F1: General Help
F2: Previous Values
F3: Optimized Defaults
F4: Save & Exit
ESC: Exit

Version 2.17.1255. Copyright (C) 2016 American Megatrends, Inc. AB

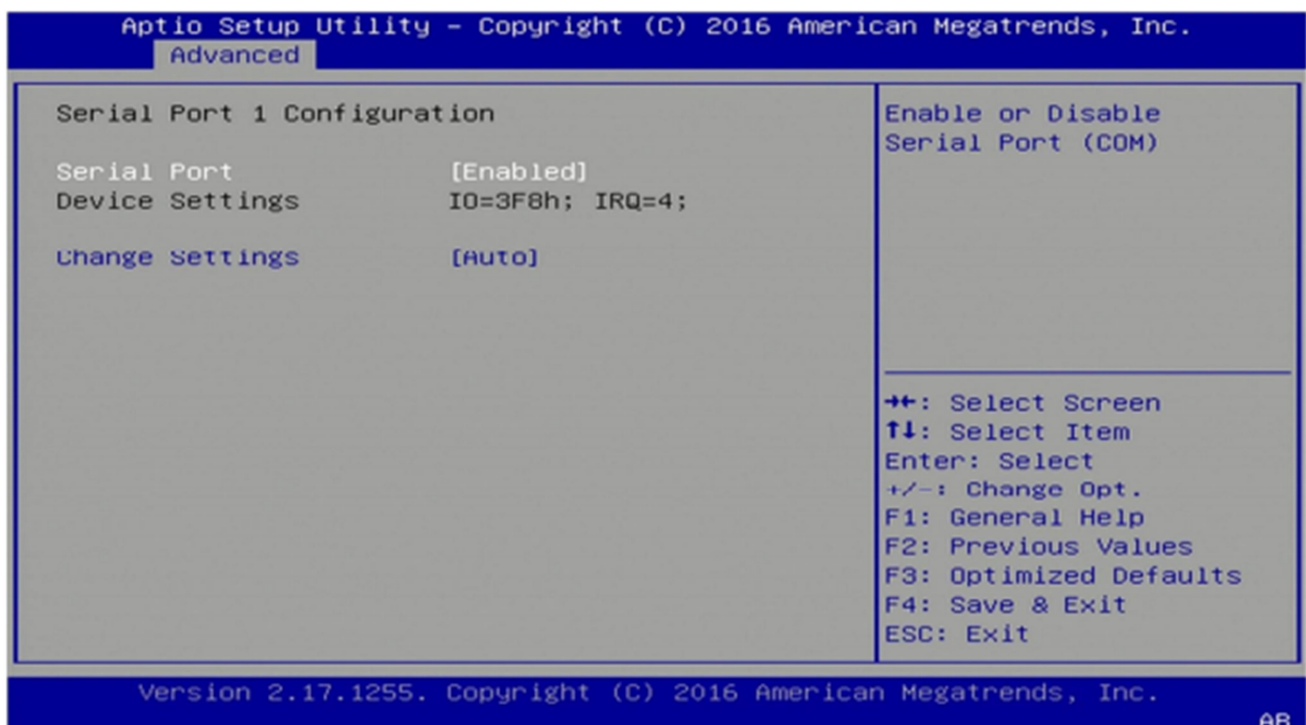
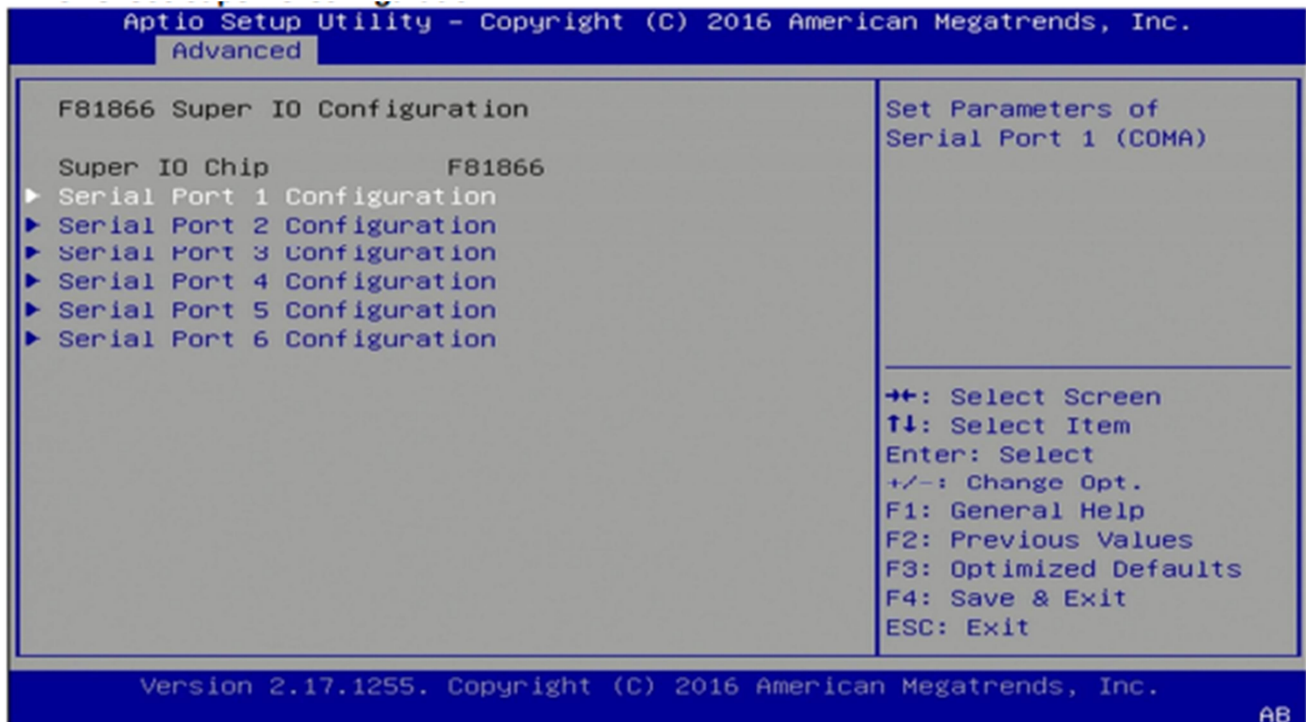
3.4.3 ACPI Setting



3.4.4 Smart Setting



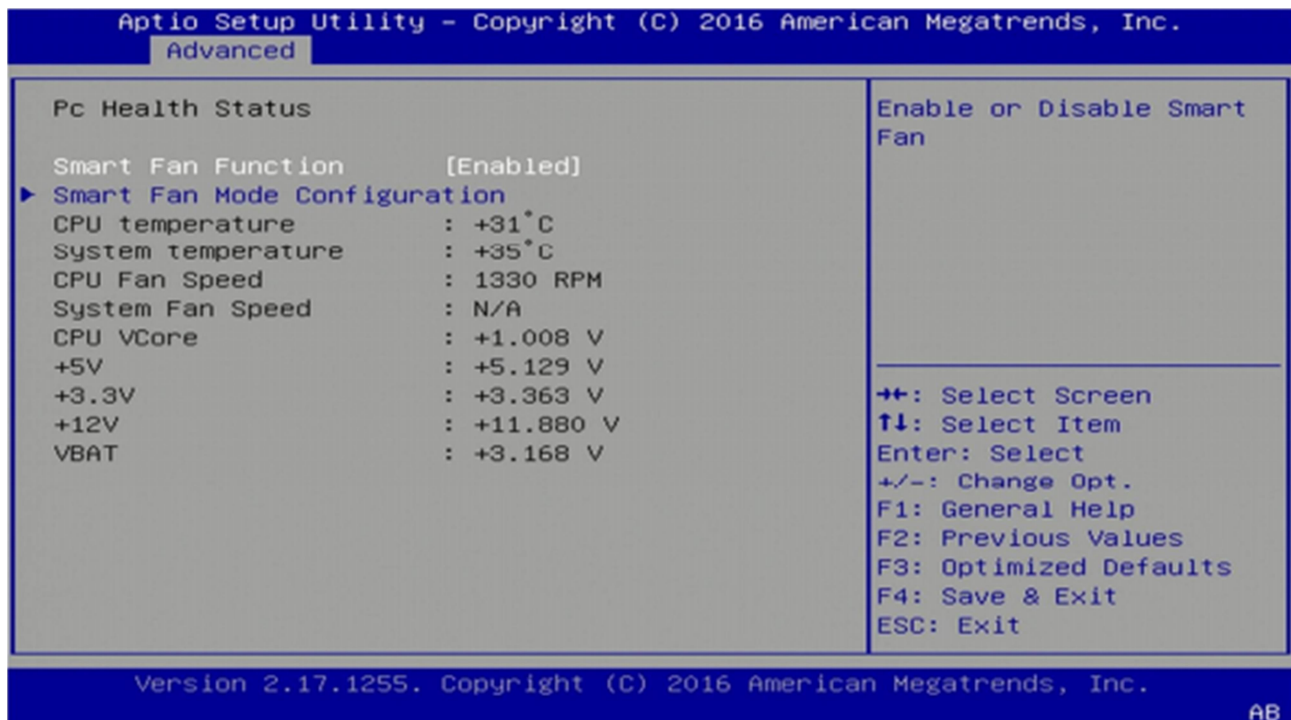
3.4.5 F81866 Super IO Configuration



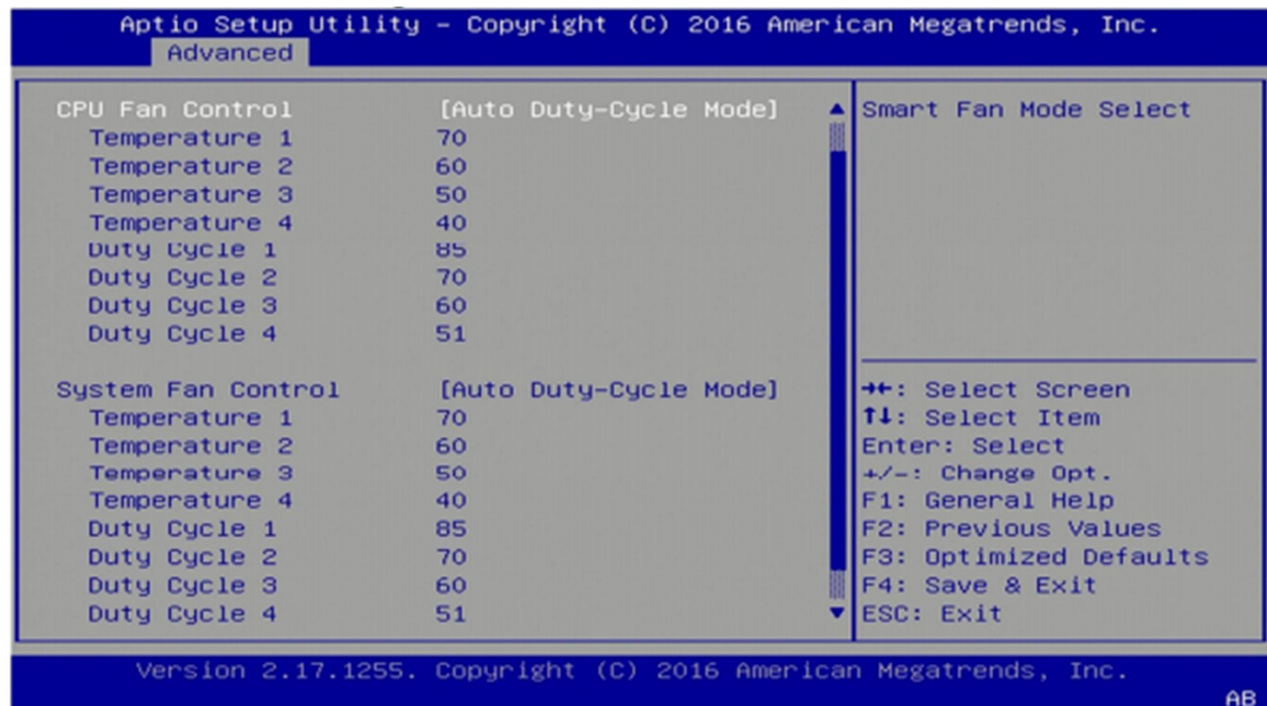
I11C-G2060S User's Manual

Revision Date: June. 29. 2022

3.4.6 Hardware Monitor



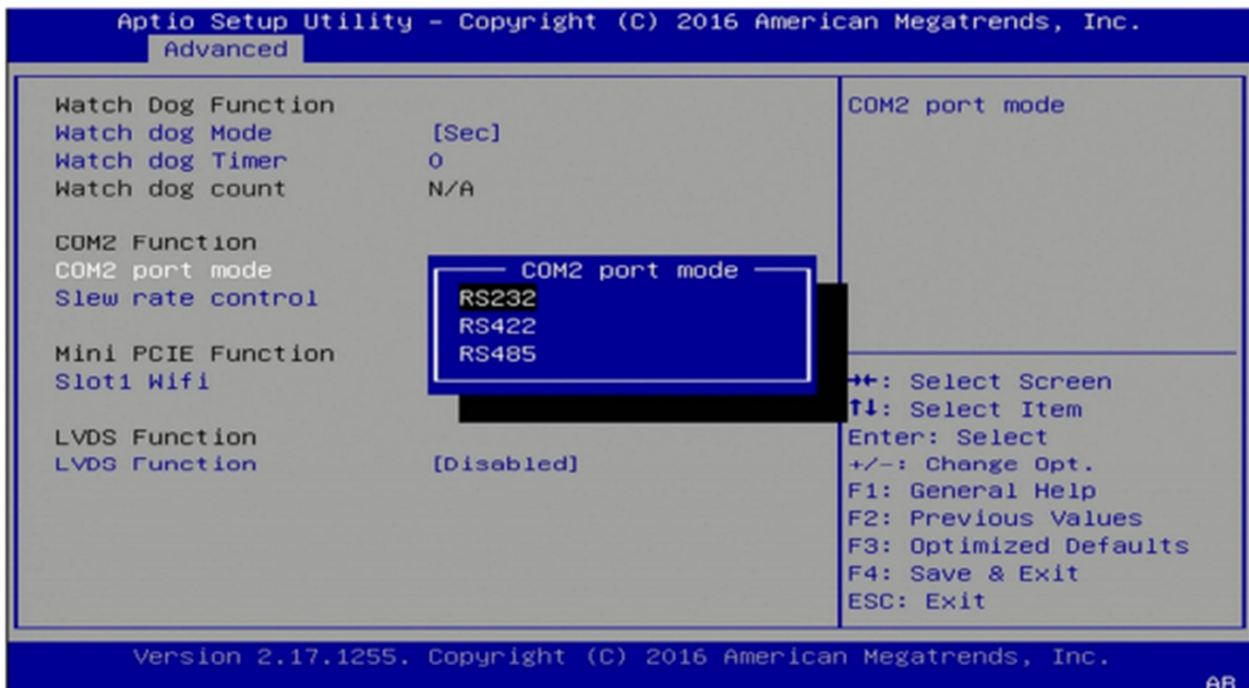
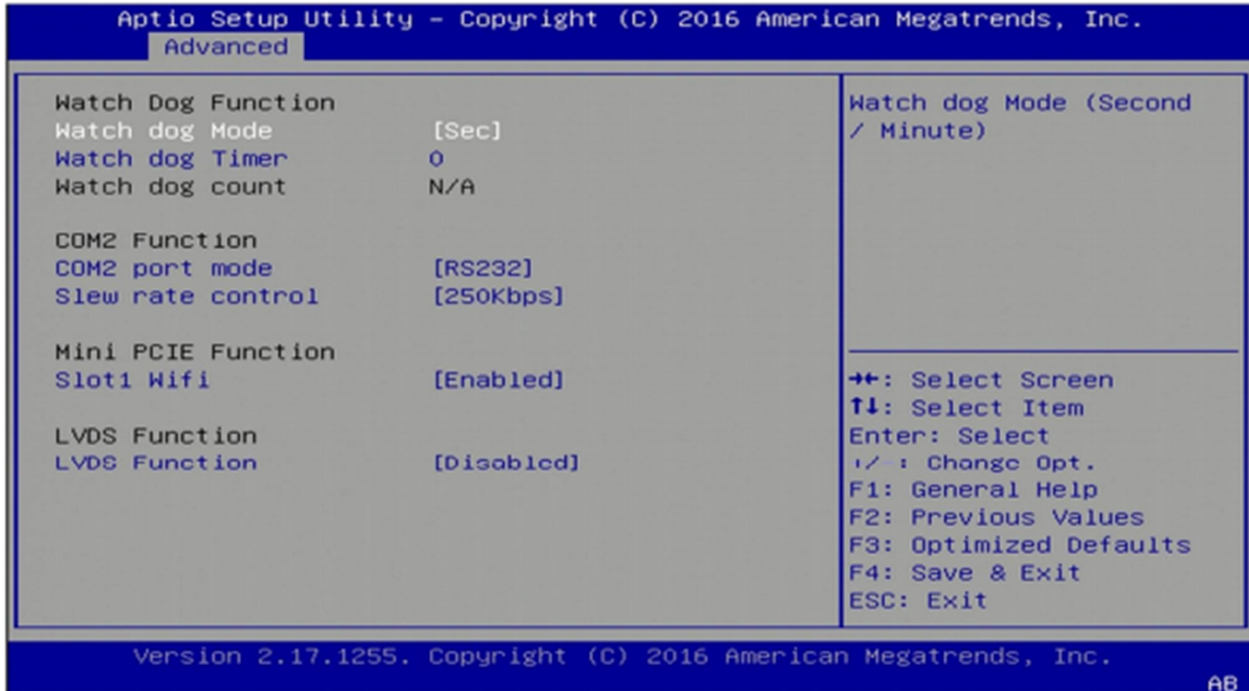
3.4.6.1 Smart Fan Mode Configuration



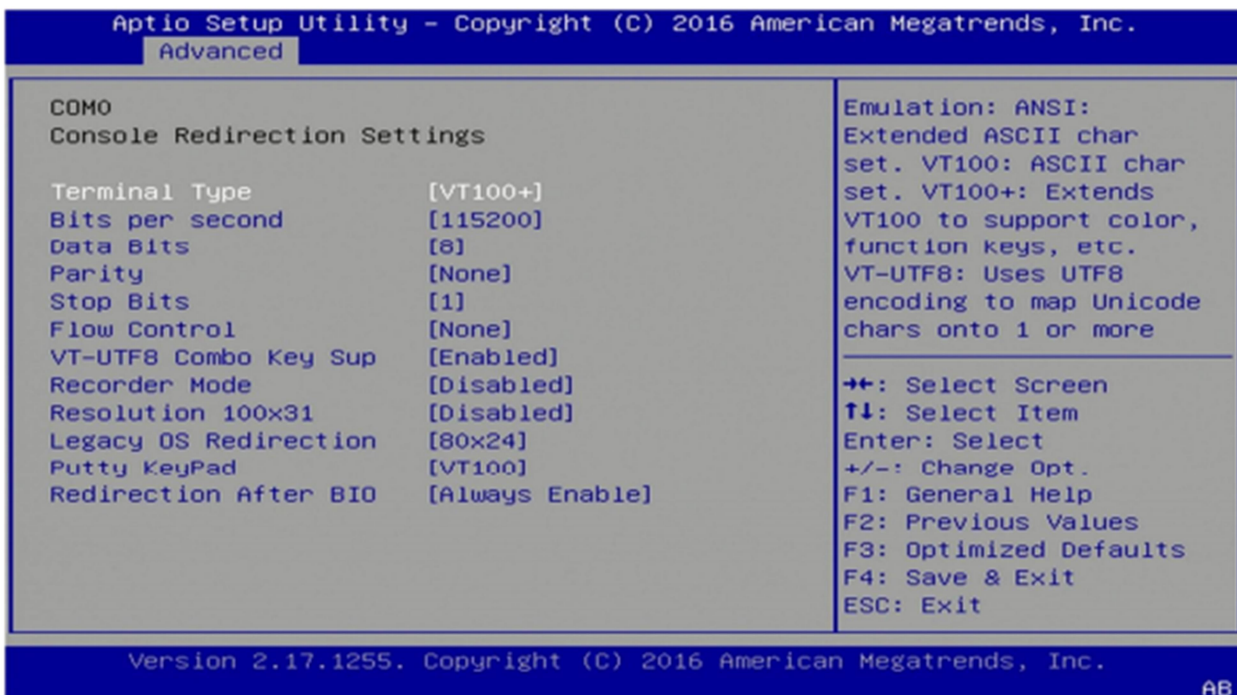
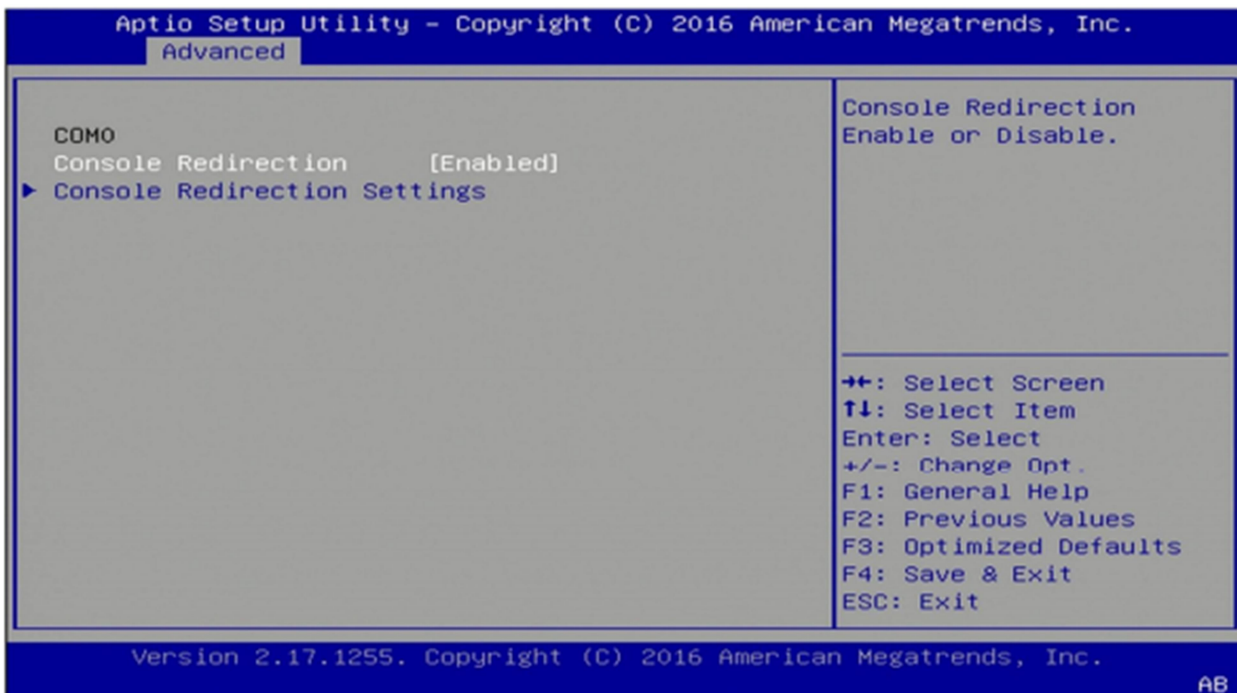
I11C-G2060S User's Manual

Revision Date: June. 29. 2022

3.4.7 Platform Function



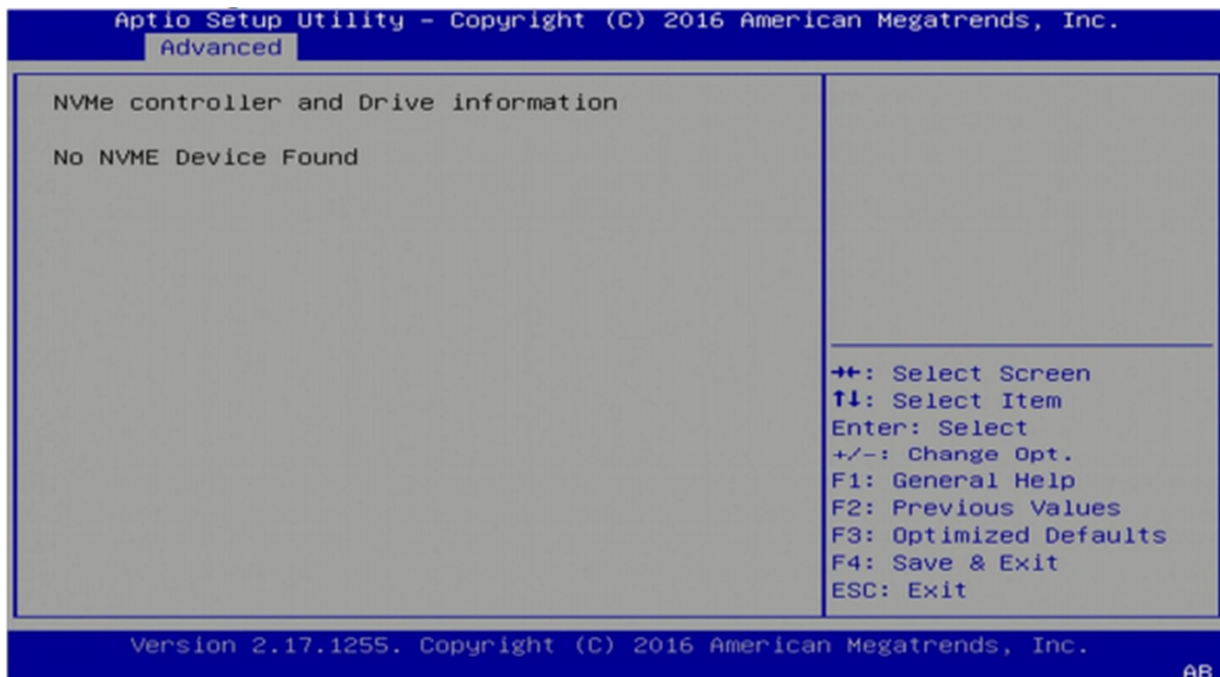
3.4.8 Serial Console Redirection



I11C-G2060S User's Manual

Revision Date: June. 29. 2022

3.4.9 NVMe Configuration



I11C-G2060S User's Manual

Revision Date: June. 29. 2022

3.4.10 USB Configuration

Aptio Setup Utility - Copyright (C) 2016 American Megatrends, Inc.
Advanced

USB Configuration		The time-out value for Control, Bulk, and Interrupt transfers.
USB Module Version	14	
USB Controllers:	1 XHCI	
USB Devices:	1 Keyboard	
Legacy USB Support		
XHCI Hand-off		
USB Mass Storage Driver		
USB hardware delays a		
USB transfer time-out	[20 sec]	
Device reset time-out	[20 sec]	
Device power-up delay	[Auto]	

USB transfer time-out
1 sec
5 sec
10 sec
20 sec

Select Screen
Select Item
Enter: Select
+/-: Change Opt.
F1: General Help
F2: Previous Values
F3: Optimized Defaults
F4: Save & Exit
ESC: Exit

Version 2.17.1255. Copyright (C) 2016 American Megatrends, Inc. AB

3.4.11 CSM Configuration

Aptio Setup Utility - Copyright (C) 2016 American Megatrends, Inc.
Advanced

Compatibility Support Module Configuration		UPON REQUEST - GA20 can be disabled using BIOS services. ALWAYS - do not allow disabling GA20; this option is useful when any RT code is executed above 1MB.
CSM Support	[Enabled]	
CSM16 Module Version	07.79	
GateA20 Active	[Upon Request]	
Option ROM Messages	[Force BIOS]	
INT19 Trap Response	[Immediate]	
Boot option filter	[UEFI and Legacy]	
Option ROM execution		
Network	[Do not launch]	
Storage	[Legacy]	
Video	[Legacy]	
Other PCI devices	[UEFI]	

USB transfer time-out
1 sec
5 sec
10 sec
20 sec

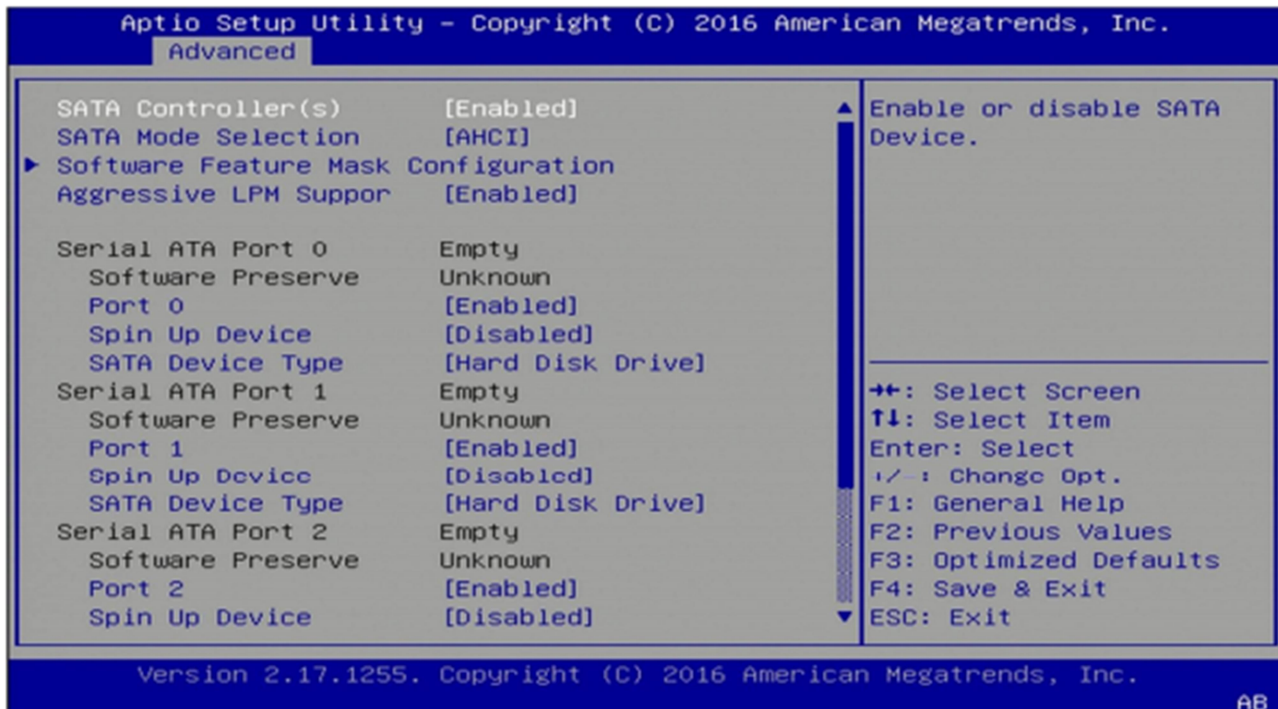
++: Select Screen
↑↓: Select Item
Enter: Select
+/-: Change Opt.
F1: General Help
F2: Previous Values
F3: Optimized Defaults
F4: Save & Exit
ESC: Exit

Version 2.17.1255. Copyright (C) 2016 American Megatrends, Inc. AB

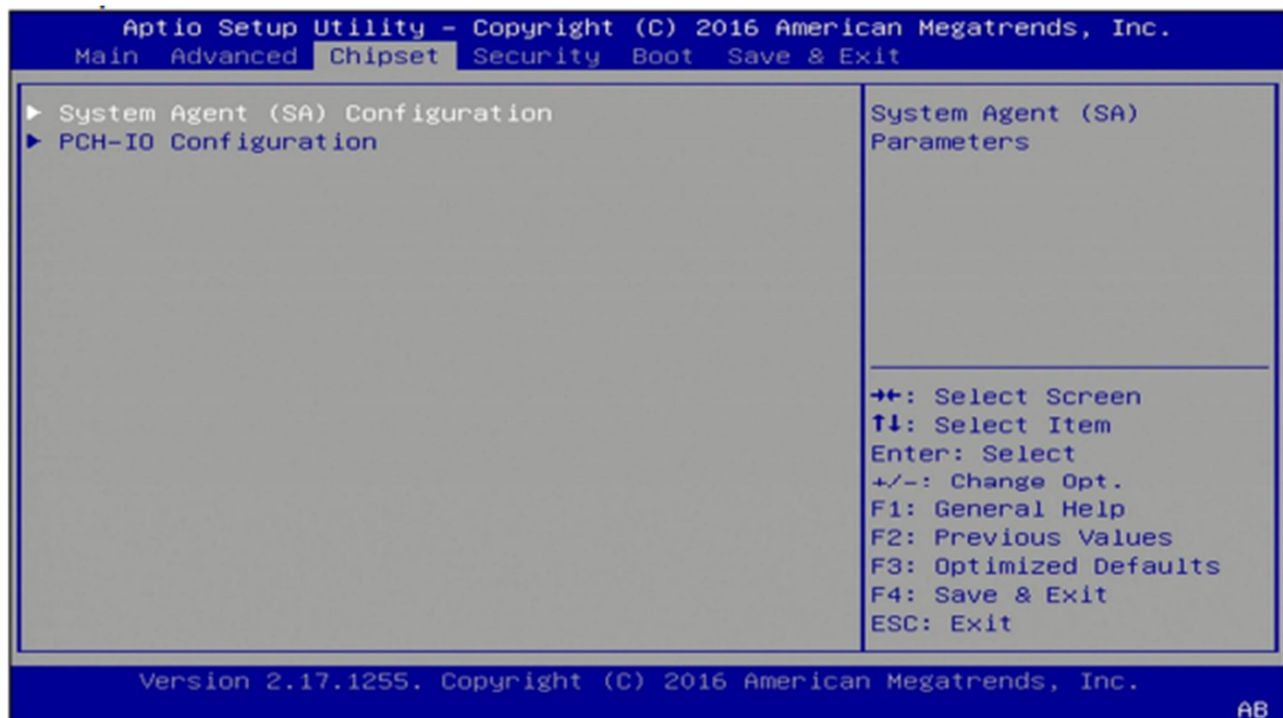
I11C-G2060S User's Manual

Revision Date: June. 29. 2022

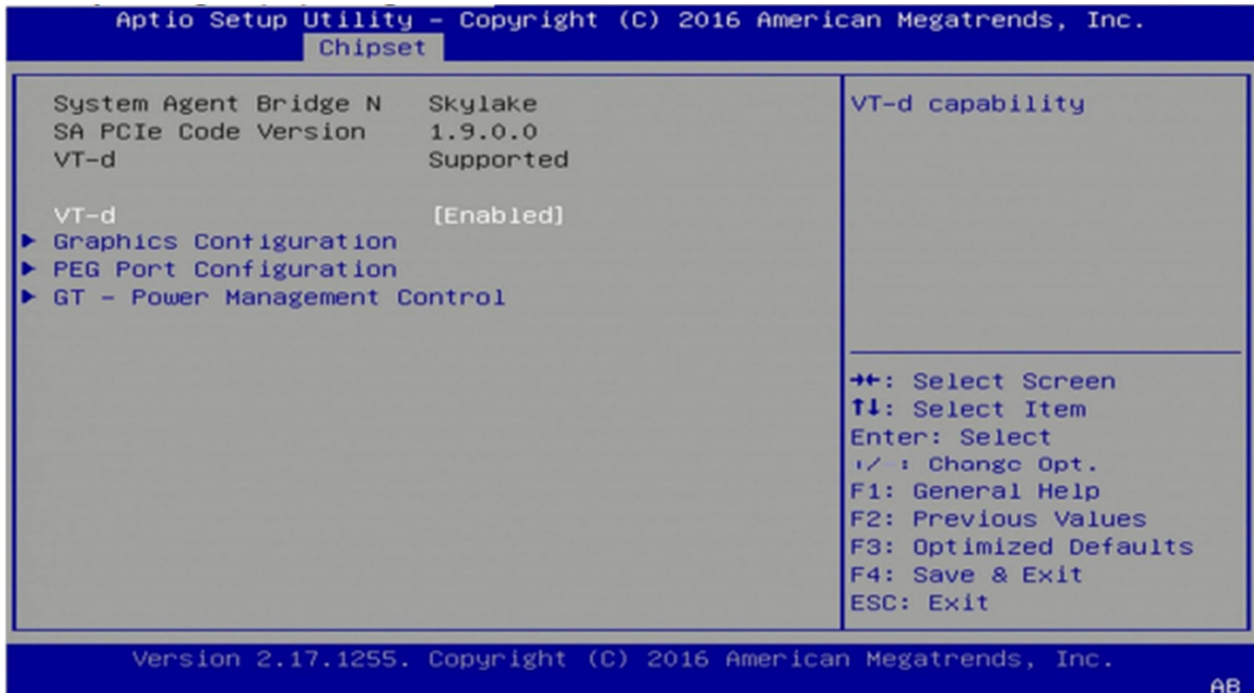
3.4.12 SATA Configuration



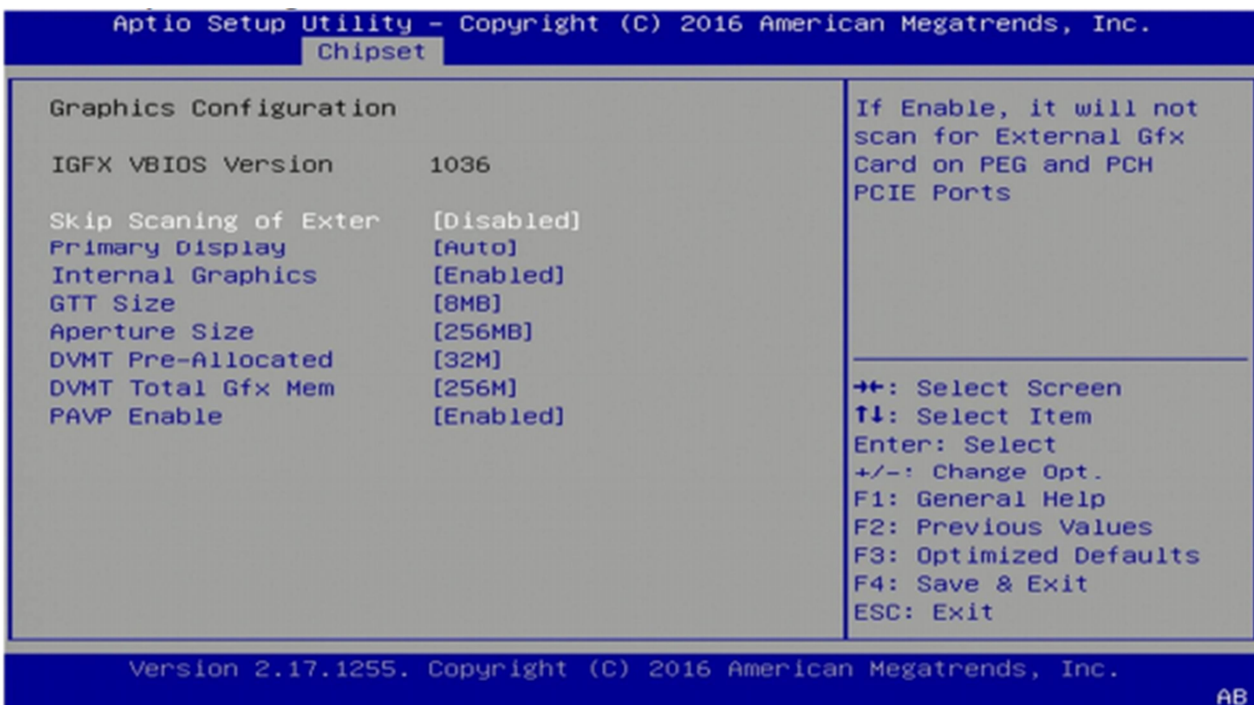
3.5 Chipset Menu



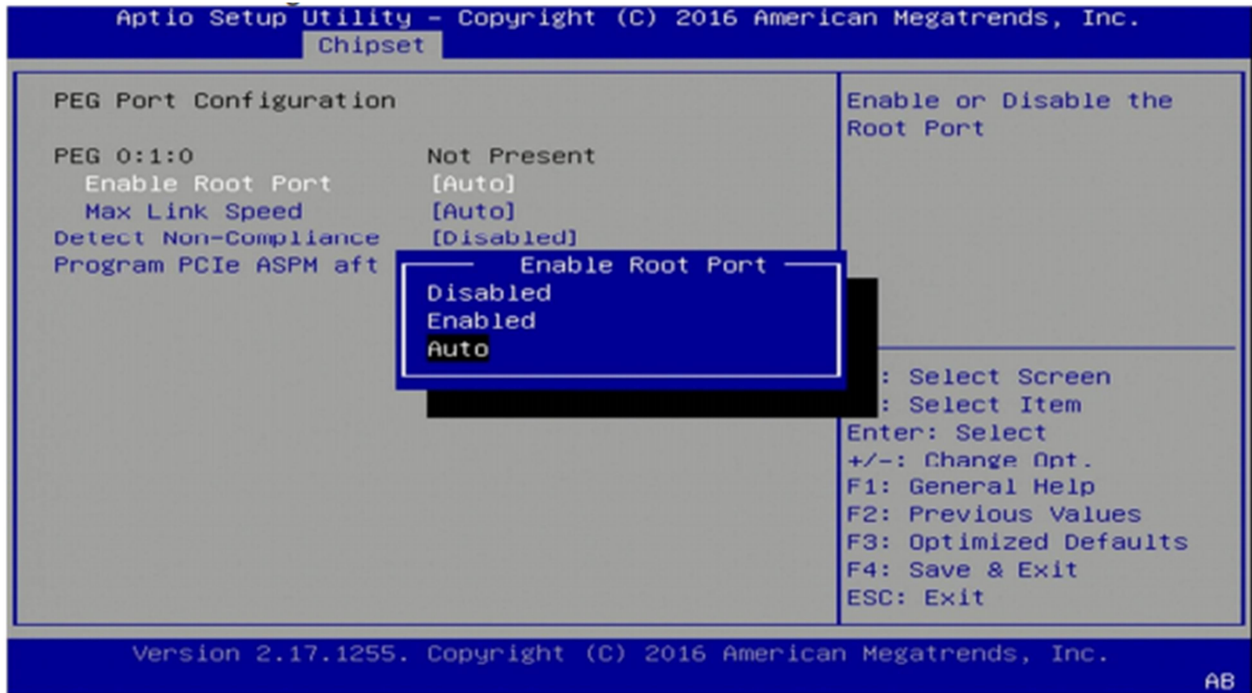
3.5.1 System Agent (SA) Configuration



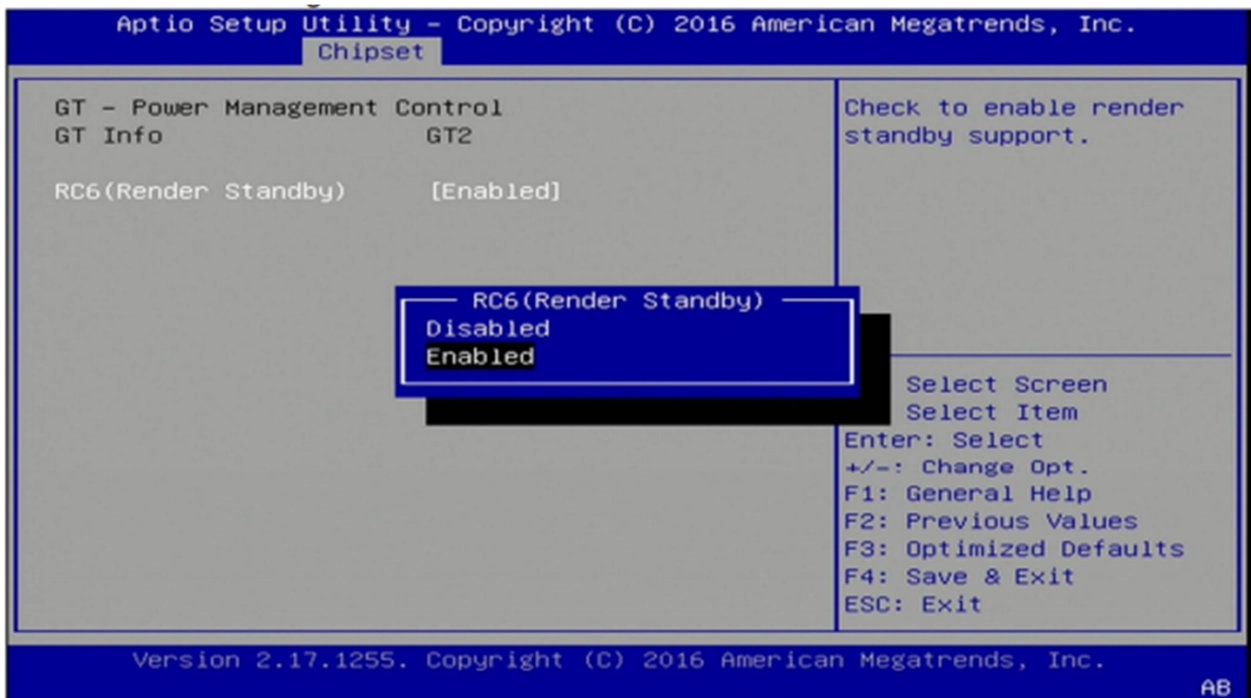
3.5.1.1 Graphics Configuration



3.5.1.2 PEG Port Configuration



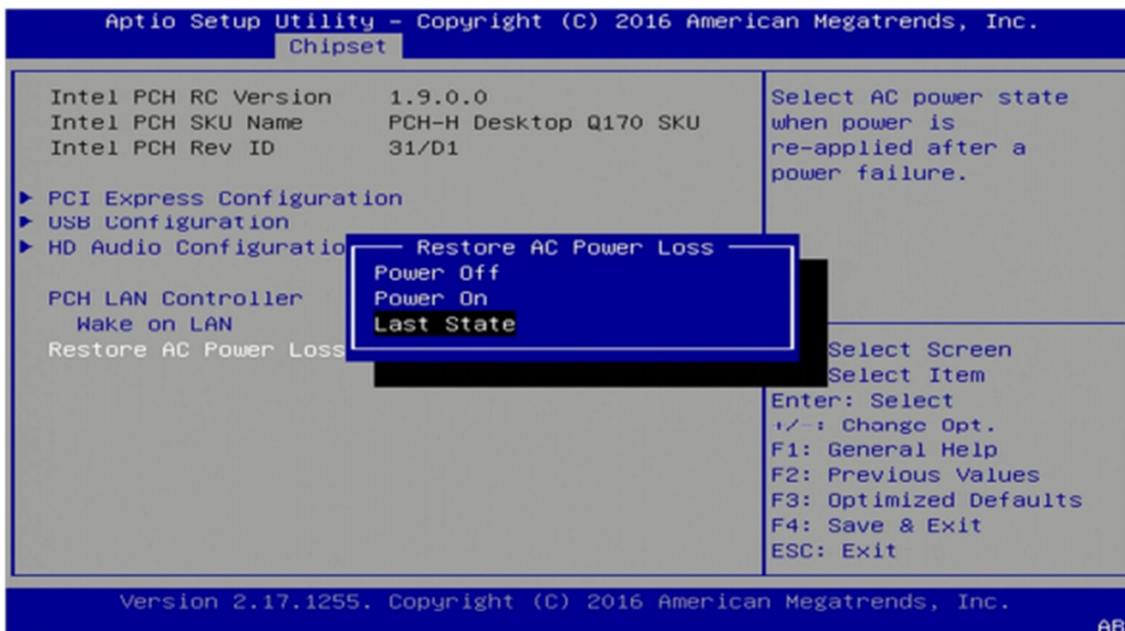
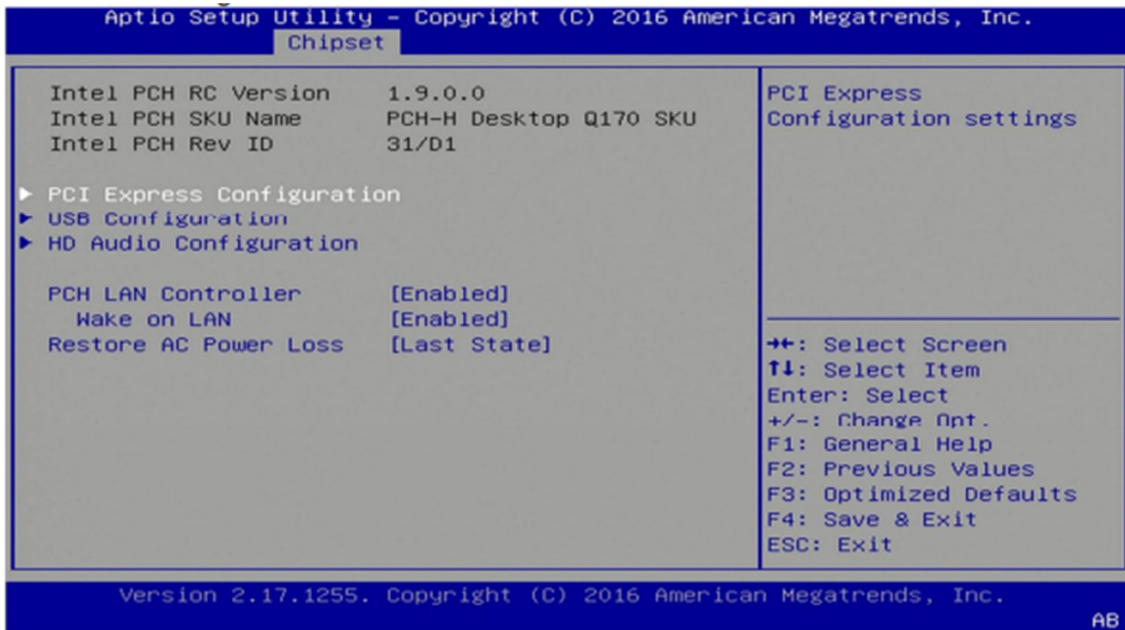
3.5.1.3 GT-Power Management Control



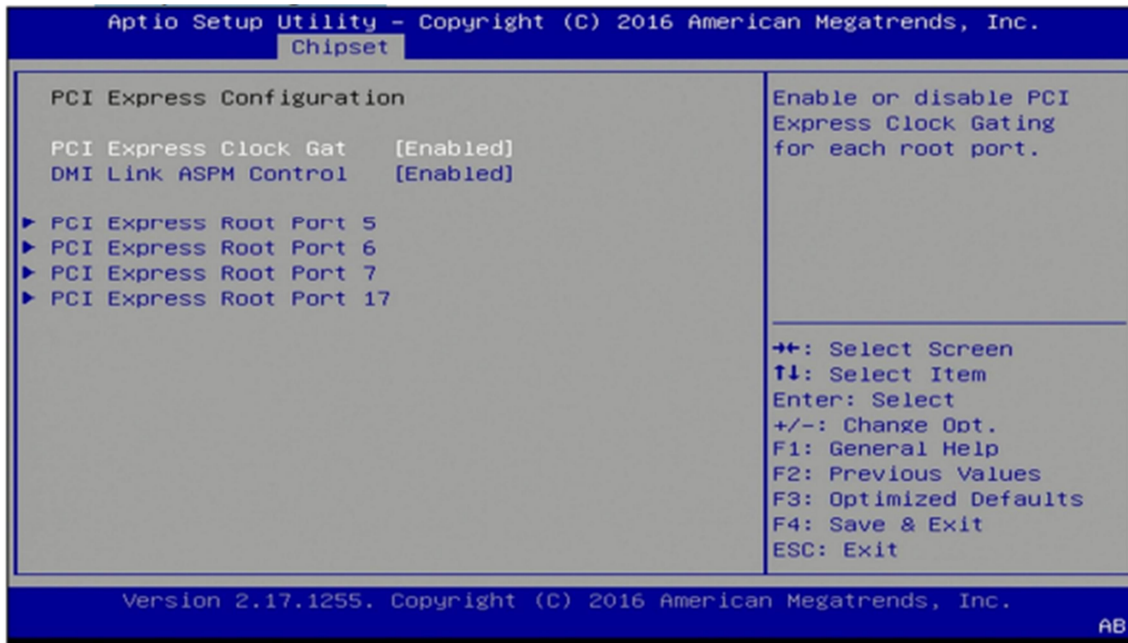
I11C-G2060S User's Manual

Revision Date: June. 29. 2022

3.5.2 PCH-IO Configuration



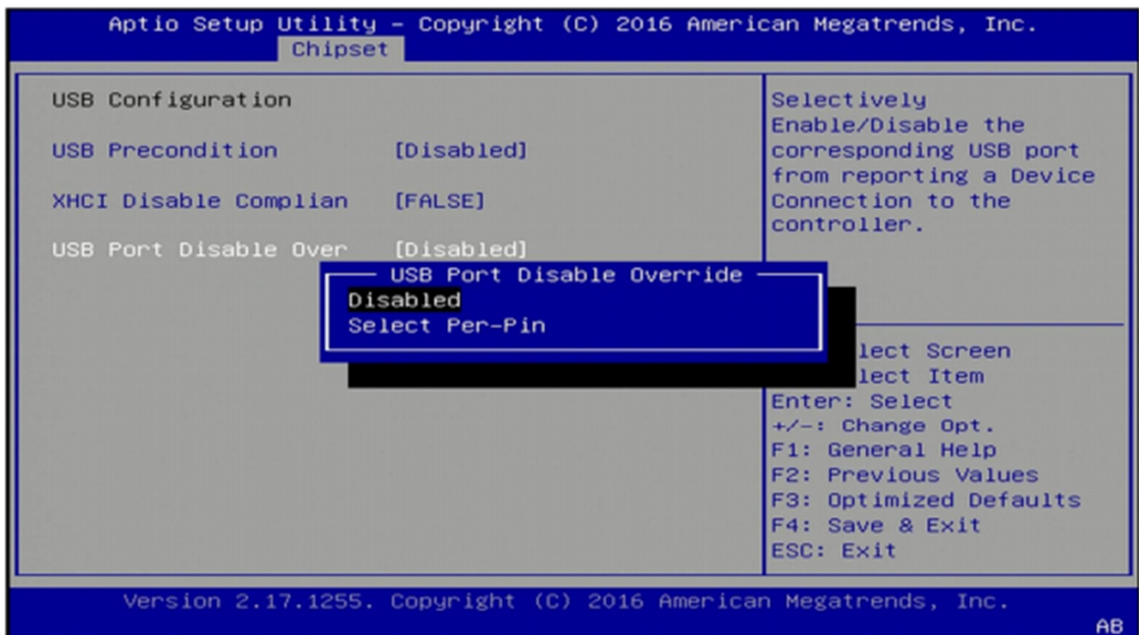
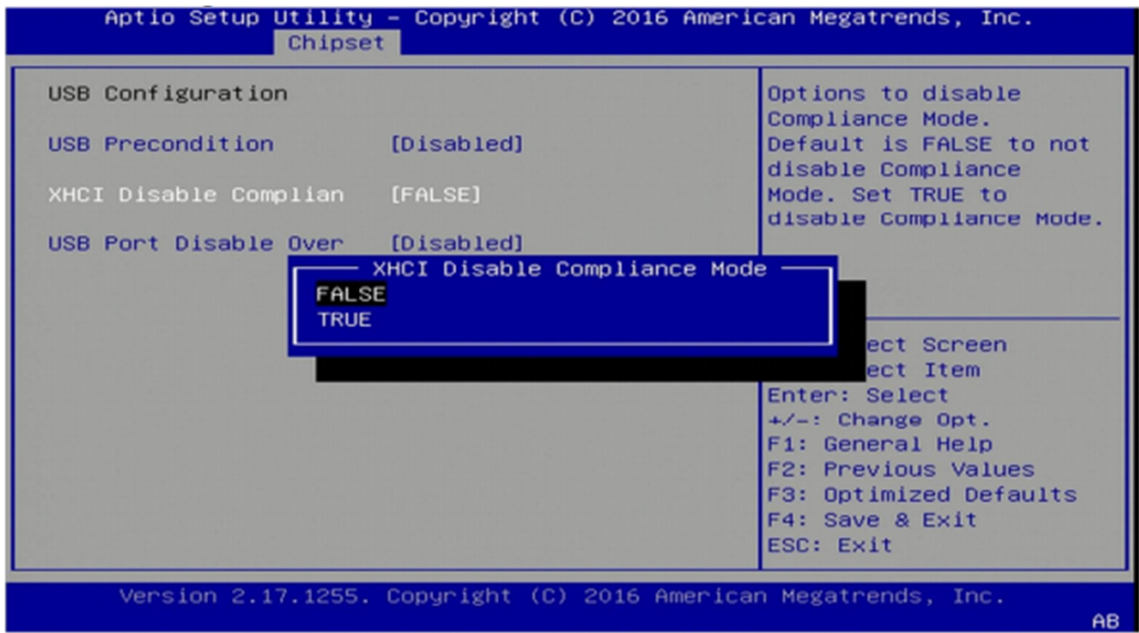
3.5.2.1 PCI Express Configuration



I11C-G2060S User's Manual

Revision Date: June. 29. 2022

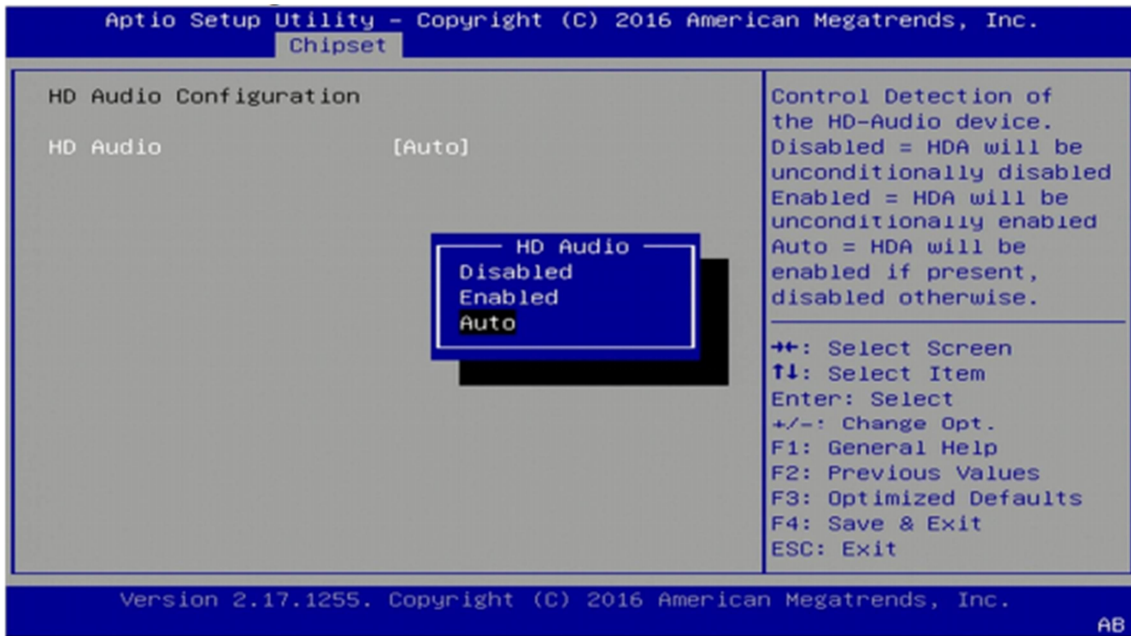
3.5.2.2 USB configuration



I11C-G2060S User's Manual

Revision Date: June. 29. 2022

3.5.2.3 HD Audio Configuration

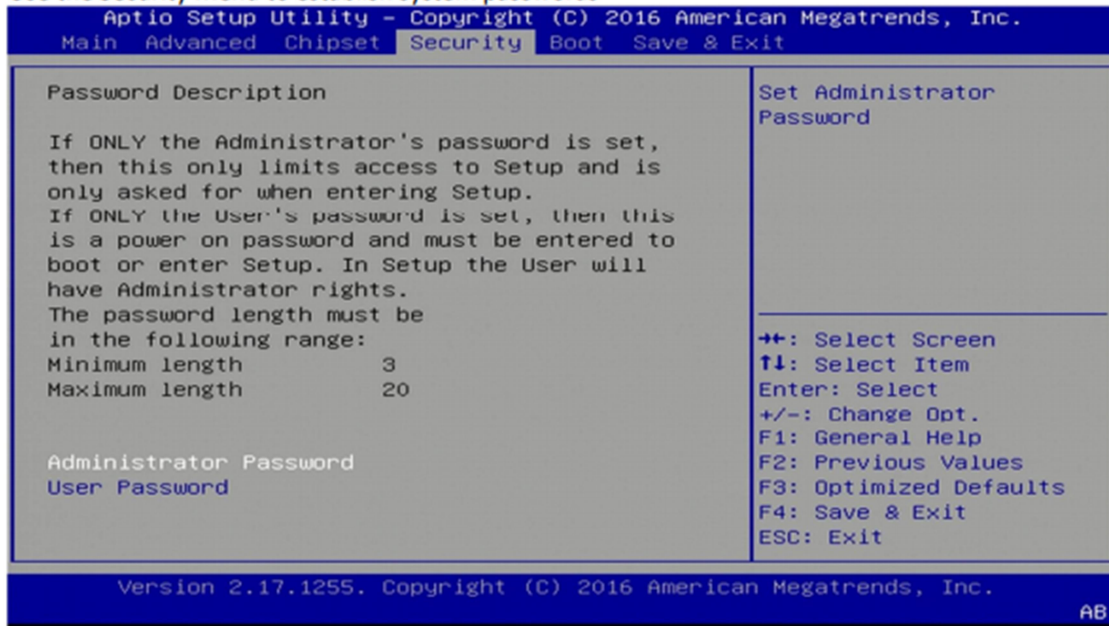


I11C-G2060S User's Manual

Revision Date: June. 29. 2022

3.6 Security Menu

Use the Security Menu to establish system passwords



Administrator Password

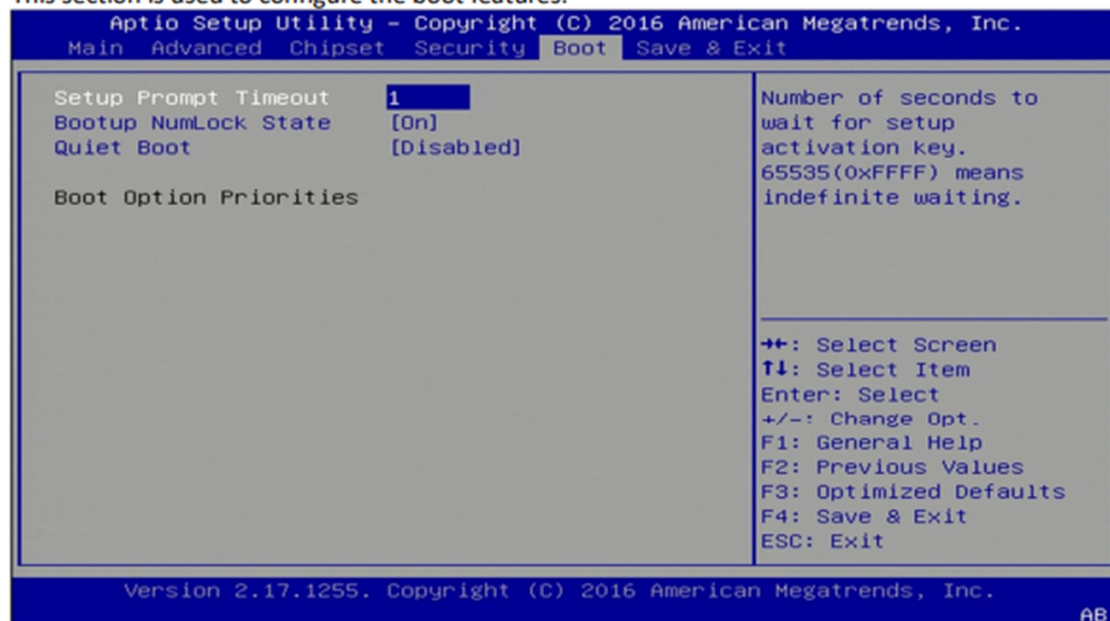
Set administrator password.

User Password

Set user Password.

3.7 Boot Menu

This section is used to configure the boot features.



Setup Prompt Timeout

Number of seconds to wait for setup activation key. 65535 (0xFFFF) means indefinite waiting.

Bootup NumLock State

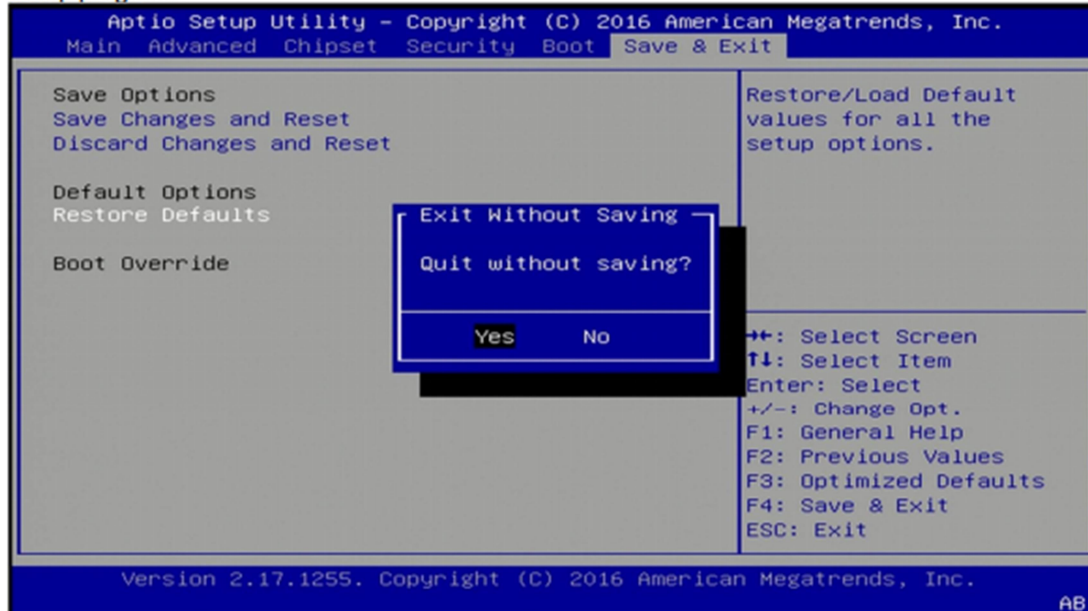
Select the keyboard NumLock state

Quiet Boot

Enables or disables quiet boot option

3.8 Save & Exit

This screen provides functions for handling changes made to the BIOS settings and the exiting of the Setup program.



Save Changes and Exit

Exit system setup after saving the changes

Discard Changes and Exit

Exit system setup without saving changes

Restore Defaults

Restore/Load default values for all the setup options